

# Pumas of Patagonia

## *Tracking Torres del Paine's Wild Cats*

November 1 to 10, 2026



Pumas

© Cheesemans' Ecology Safaris

## SAFARI OVERVIEW

---

Embark on an exclusive **puma** tracking **adventure** in **Torres del Paine, Chile**, one of the world's premier destinations for observing these elusive big cats in the wild. This immersive **Patagonia wildlife** tour offers rare access to **Estancia Laguna Amarga**, a private reserve renowned for having one of the highest densities of **wild pumas** anywhere. Accompanied by expert local guides, you'll venture out at dawn and dusk, when pumas are most active, to observe them as they hunt **guanacos**, patrol their territories, and interact with **cubs**. Explore the rugged Patagonian terrain by 4x4 vehicle and guided treks, allowing for flexible and frequent wildlife encounters. In addition to pumas, you'll likely encounter Andean condors, guanacos, **Patagonian foxes**, and **hog-nosed skunks**, offering a rich and varied wildlife experience. Your journey concludes at **Olga Teresa Ranch**, home to the largest known concentration of **Andean condors**, where dramatic cliffs provide unforgettable **photography** opportunities.

### WHY CHOOSE THIS TRIP?

- **Private Puma Tracking at Laguna Amarga Ranch:** Spend four days with expert guides in exclusive puma territory, maximizing your chances for close wildlife encounters.
- **Exceptional Big Cat Photography Opportunities:** Capture stunning images of hunting, stalking, and mother-cub interactions in golden Patagonian light.
- **4x4 Adventures & Scenic Treks:** Combine off-road travel and moderate hiking to access the best wildlife habitats and vantage points.

- **Andean Condor Viewing at Olga Teresa Ranch:** Observe the world’s largest concentration of Andean condors soaring above rugged cliff faces.
- **Immersive Patagonia Experience:** Experience the dramatic landscapes of Torres del Paine, from glacial valleys to windswept steppes and ancient southern beech forests.

**DAYS:** 10, including estimated travel time. Local leader

**GROUP SIZE:** 8.

**COST:** \$9,270 per person, double occupancy, not including airfare, singles extra. See the *Costs* section on page 4.

Date	Description	Accommodation	Meals
Nov 1	<b>Travel to Punta Arenas, Chile.</b>		
Nov 2	<b>Arrive in Punta Arenas.</b> Transfer to a scenic lodge and meet your guides.	Cabo de Hornos, Punta Arenas	D
Nov 3	<b>Scenic Transfer to Torres del Paine via Cerro Castillo.</b> Journey through iconic landscapes, watching for wildlife such as guanacos, Patagonian foxes, and hog-nosed skunks along the way.	El Ovejero, Cerro Castillo	B, L, D
Nov 4–7	<b>Four Full Days of Puma Tracking at Laguna Amarga Ranch.</b> Enjoy exclusive access to private land with expert trackers, heading out at dawn and dusk to search for pumas and other wildlife.		B, L, D
Nov 8	<b>Final Morning in Torres del Paine &amp; Andean Condor Viewing.</b> Visit Olga Teresa Ranch to see Andean condors soaring above dramatic cliffs before returning to Punta Arenas.	Cabo de Hornos, Punta Arenas	B, L, D
Nov 9	<b>Depart for Home.</b> Travel back with unforgettable memories of Patagonia’s wild beauty.		B
Nov 10	<b>Arrive Home.</b>		

## LEADER

Cheesemans’ Ecology Safaris carefully selects leaders who are experts in their field to ensure that your experience is the best it can be. One leader, assisted by other local park guides, will provide a range of expertise for your trip.

## DETAILED ITINERARY

### Nov 1 ~ Travel to Punta Arenas, Chile from home

Begin your journey to Patagonia by flying into Punta Arenas.

### **Nov 2 ~ Arrive in Punta Arenas**

Upon arrival, our local representative will greet you at the airport and transfer you to your hotel. If you'd like to arrive early, we're happy to assist with additional nights and alternate transfer arrangements.

### **Nov 3 ~ Transfer to Cerro Castillo and begin exploring Torres del Paine**

Enjoy a scenic transfer to Torres del Paine via Cerro Castillo. Along the way, look for guanacos, southern grey foxes, and Patagonian hog-nosed skunks as you take in sweeping views of southern beech forests (Nothofagus). In the valleys, your guide will share insights into the region's geology and the formation of the dramatic landscapes that define Torres del Paine—one of Patagonia's most iconic natural wonders.



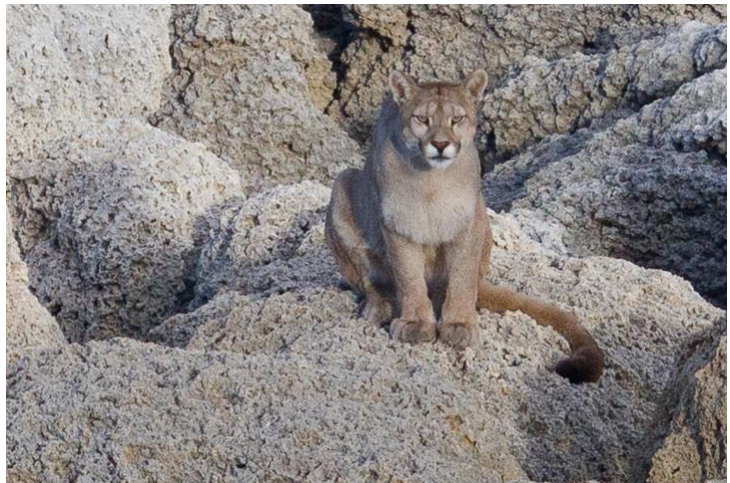
Guanaco

© Debbie Thompson

### **Nov 4–7 ~ Four full days of puma trekking at Laguna Amarga Ranch**

Spend four immersive days tracking wild pumas on the eastern flank of Torres del Paine within the private lands of Estancia Laguna Amarga—an area renowned for one of the highest concentrations of wild pumas in the world. With exclusive access and expert local trackers, you'll explore key wildlife corridors near Sarmiento Lake, Laguna Amarga, and Laguna Azul by 4x4 vehicle and on foot. Walks are easy to moderate, with terrain varying between 160–1,000ft (50–250m) in elevation and one high point at 1,000ft (300m).

Excursions are timed for dawn and dusk when pumas are most active. With a respectful, non-intrusive approach, you may witness them hunting guanacos, interacting with cubs, or patrolling their territories. Each day includes two field sessions—one in the morning and one in the evening, each approximately 4 hours long. Mid-day hours are reserved for rest, image review, and lectures to avoid disturbing wildlife during their rest and recuperation periods after a night of hunting.



Puma

© Claudio Vidal

### **Nov 8 ~ Final morning in Torres del Paine and Andean condor viewing at Olga Teresa Ranch**

Enjoy your last morning taking in the beauty of Torres del Paine before transferring to Olga Teresa Ranch. Here, you'll have the rare opportunity to witness one of the world's largest roosts of Andean condors, with up to 100 birds soaring above the cliffs. Climb Cerro Palomares (700 feet) for stunning views and photography of these majestic raptors. The ranch also plays a vital role in condor conservation and research. Return to Punta Arenas this evening.

**Nov 9 ~ Depart for home**

Transfer to Punta Arenas airport for your flights home, carrying with you unforgettable memories and photographs to look back on.

**Nov 10 ~ Arrive home****COSTS (ALL COSTS ARE IN US DOLLARS)**

---

**Cost**

Type	Cost per Person
Trip Cost, double occupancy	\$9,270
Single Supplement	\$850

Costs are per person, double occupancy, not including airfare, singles extra. See *Included* and *Not Included* sections for more details.

If you are a single traveler, we will try to find a roommate for you, but if we cannot pair you with a roommate, we may charge you a single supplement. Single rooms cost extra and are subject to availability.

**Payment Schedule**

Payment	Due Date	Amount per Person
Deposit	Due now to reserve your space	\$500
Final	May 25, 2026	Remaining Balance

Payments are due based on the schedule above. All reservations require a deposit to confirm reservation of your space.

**Cancellations**

Until the Final Payment due date, deposits are refundable except for a cancellation fee of \$150 per person, which can be applied toward another trip if reserved within six months of the cancelled trip's departure date. Cancellations are non-transferable. No refunds are given after the Final Payment due date.

**Included**

- Carbon offsets for the duration of this trip.
- All leaders, transport, park entry fees, landing fees, and permits for all activities, unless described as optional.
- Accommodations for the nights of November 2 through November 8.
- Meals from dinner on November 2 through breakfast on November 9.
- Transfers on November 2 and November 9 between Cabo del Hornos and the Punta Arenas Airport.
- Trip Planning Materials – information about entry requirements, flights, packing, gratuities, etc.

**Not Included**

- Carbon offsets for your flights to/from this trip.
- All airfare, airport and departure taxes, and excess baggage fees.



- Divergent airport transfers (arranged by us) and extra hotel nights.
- Gratuities – tipping is always discretionary. However, we will add a gratuity of \$210 per participant (\$35 per participant per day for November 3 to 8 with our local guides) to your final payment.
- [Emergency evacuation insurance and trip cancellation insurance](#).
- Items of a personal nature, such as laundry, telephone calls, medical costs or hospitalization, room service, alcoholic and other beverages, items not on the regular menu, etc. If you have special dietary needs, please indicate them on your Traveler Form.

## SIGN UP

---

Please contact us first to check availability, reserve your space, and obtain a Traveler Form. To confirm your reservation, we require a deposit and signed form from each participant.

[Cheesemans' Ecology Safaris](#)

Email: [info@cheesemans.com](mailto:info@cheesemans.com)

WhatsApp: (408) 741-5330

Phone: (800) 527-5330 or (408) 741-5330

## OTHER DETAILS

---

### Climate

Torres del Paine is known for its unpredictable weather conditions, so be prepared for wind, warm sun, and sudden cold. The average temperatures in Torres del Paine in November range from 40°F (4°C) at night to about 63°F (17°C) during the day, and rain is infrequent.

### Fitness Level

This trip involves long days in the field, so come with good energy levels for easy to moderate walks and bumpy jeep rides! Please contact us if you have any health concerns that may make this trip challenging.

### Accommodations

Your Puma trekking lodge is well-situated, warm, charming, and welcoming. It is not a luxury resort.

### Flights

Detailed logistical information is included in the Trip Planning Materials we will send you.

Flights you book

- Arrive in Punta Arenas (PUQ) by 5:00pm on November 2.
- Depart from Punta Arenas (PUQ) after 12:00am on November 9.

### Terms and Conditions

Read our current [Terms and Conditions](#).

### Conservation

Our company ethos has always regarded conservation as inseparable from responsible tourism. We struggle with the dilemma that traveling worldwide expends climate-changing carbon. However, we wholeheartedly

believe that traveling with us will cultivate your passion for conserving our beautiful world while stimulating each destination's local economy. We encourage you to explore the various ways in which Cheesemans' operates within this context:

- **Cheesemans' Trips are [Carbon Neutral](#).**
- **Offsetting your Travel to/from our Trip:** We ask you to pledge to offset the carbon emissions for your travel to and from our trips. You can purchase offsets with most airlines (Delta includes them automatically), use our handy [carbon calculator](#) and donate to Sustainable Travel International, or contribute to your favorite offsetting organization.