

Galápagos Islands

Evolution's Playground

May 30 to June 17, 2026



Galapagos Penguins
© Chris Desborough

SAFARI OVERVIEW

Experience the most immersive 15-day voyage through the Galápagos Islands, where fearless wildlife awaits your discovery. Your adventure begins in Ecuador's cloud forest before you embark on an intimate exploration of the Enchanted Isles aboard the Samba, a private charter for your once-in-a-lifetime experience. Guided by our expert resident naturalist, you'll encounter a remarkable diversity of endemic species, from reptiles to Blue-footed Boobies, Waved Albatross, Galápagos Penguins, marine mammals, and sharks. With early and late landings, you'll have unparalleled opportunities to capture breathtaking moments and maximize wildlife encounters. Dive deep into the extraordinary beauty of the Galápagos to appreciate the impressive forces that have and continue to shape this remarkable ecosystem.

HIGHLIGHTS

- Embark on a 15-day voyage, navigating 16 islands and experiencing the diverse Galápagos archipelago.
- Snorkel with sea lions, penguins, tropical fish, sharks, rays, and rare coral formations.
- Witness the mating behavior of Waved Albatross on their sole nesting site on Española Island, as well as that of frigatebirds and Blue-footed Boobies.

- Visit the Charles Darwin Research Station to learn about conservation and restoration efforts.
- Observe hummingbirds, Andean Cock-of-the-rock, and other birds in Ecuador's cloud forest.

LEADER: Juan Manuel Salcedo plus an assistant guide.

DAYS: 19, including estimated travel time. 14 nights aboard the *Samba*.

GROUP SIZE: 14.

BOAT: The *Samba*. See the *Boat* section on page 13.

COST: \$12,350 to \$13,500 per person, double occupancy, depending on cabin type, not including airfare, singles extra. See the *Costs* section on page 9.

Date	Description	Accommodation	Meals
May 30	Arrive in Quito, Ecuador.	Holiday Inn Quito Airport, Quito	—
May 31	Explore the cloud forest, bird watching in Yanacocha and Old Nono-Mindo. Observe Andean Cock-of-the-rock lek. Watch nocturnal mammals near the lodge.	Bellavista Cloud Forest Lodge, Tandayapa	B, L, D
Jun 1	Watch for many dazzling species of birds at Bellavista and return to Quito after lunch.	Holiday Inn Quito Airport, Quito	B, L, D
Jun 2	Fly to Baltra and board the <i>Samba</i> . First landing on Mosquera Islet .	Aboard the <i>Samba</i>	B, L, D
Jun 3	Genovesa: Darwin Bay and Prince Philip's Steps.		
Jun 4	Marchena: Snorkel at Punta Mejía and Playa Negra.		
Jun 5	Isabela: Punta Albemarle and Punta Vicente Roca.		
Jun 6	Fernandina: Punta Espinoza. Isabela: Urbina Bay.		
Jun 7	Isabela: Elizabeth Bay and Punta Moreno.		
Jun 8	Floreana: Post Office Bay and Champion Islet.		
Jun 9	Santa Cruz: Highlands and Charles Darwin Research Station.		
Jun 10	Floreana: Punta Cormorant, Devil's Crown, and the Baroness Lookout.		
Jun 11	Española: Punta Suárez with Waved Albatross and Gardner Bay.		
Jun 12	San Cristóbal: Punta Pitt, Cerro Brujo, and Isla Lobos.		
Jun 13	Santa Fé: Barrington Bay. Plaza Sur .		
Jun 14	Sombrero Chino Islet. Bartolomé: Pinnacle Rock.		
Jun 15	Santiago: James Bay. Rábida .		
Jun 16	Last landing at Seymour Norte , disembark at Baltra , and fly to Quito.	Holiday Inn Quito Airport, Quito	B
Jun 17	Depart for home.		B

LEADER



Juan Manuel Salcedo

Juan grew up in the Galápagos Islands where he developed his passion for wildlife while sailing on his father's boat. He received a degree from the University of San Francisco, Quito after studying Applied Ecology, Biology, and Geology. Juan also earned a skipper certificate after studying sailing and navigation in Los Angeles. Involvement in Environmental Education projects in the Galápagos Islands and on mainland Ecuador fills his spare time.

BOAT

The Samba

The *Samba* is a 78-ft steel-hulled motor yacht with a stabilizing sail making her the perfect choice to experience the Galápagos Islands to their fullest. This sturdy, stately, and very comfortable ocean-going vessel is a European Dutch classic and best in her class with a specially designed high bow. The *Samba* accommodates 14 guests in seven air-conditioned double cabins with private bathrooms and hot water. The topside settees and ample forward deck provide getaways or extra space for group activities such as stargazing, whale watching, or sunbathing. The main salon and aft dining facilities make her very socially versatile. The local chef prepares excellent international cuisine with organically grown, local produce and can accommodate most dietary requests with advance notice. The *Samba* is a graceful, top-quality, and fuel-efficient craft owned by the Salcedo family who employ Galápagos-resident crewmembers that take pride in sharing their love and dedication to these beautiful islands. The experienced and friendly crew is committed to redefining quality and excellence and takes great care in making everything environmentally friendly plus socially responsible. See the *Deck Plan* on page 13.



DETAILED ITINERARY

May 30 ~ Arrive in Quito, Ecuador

Travel to Quito, Ecuador. Our local agent will transfer you from the airport to the hotel. If you would like to arrive earlier, we can arrange divergent airport transfers and extra nights.

May 31 ~ Drive to Yanacocha, Old Nono-Mindo, and visit Cock-of-the-rock lek

Travel from the high Andes to the cloud forest and observe the change in climate, vegetation, and geology while on the mainland. You'll visit Yanacocha Reserve and drive through Old Nono-Mindo Ecoroute for vibrant bird life. Spend your time observing the Andean Cock-of-the-rock lek for colorful displays by the males plus many other special bird species in this area. Experience nocturnal mammals close to your lodge.

Jun 1 ~ Bird watching at Bellavista Lodge

Spend the morning bird watching a variety of dazzling, colorful birds around the lodge at Bellavista, including countless colorful hummingbirds that frequent feeders on the lodge grounds. Return to Quito after lunch.

Jun 2 ~ Fly to Galápagos and land on Mosquera Islet

After an early breakfast, transfer to the airport for your flight to the Galápagos Islands. Upon arrival in the islands, you'll transfer to the dock where the *Samba*, your home for this glorious adventure, awaits.

All routings and visitor sites on the Galápagos Islands are subject to change by the Galápagos National Park Service to minimize traffic and impact.



Andean Cock-of-the-rock
© Ken and Mary Campbell

After introductions and a safety briefing, you'll make your first landing at nearby Mosquera Islet where the beach rises from the ocean floor with sand grains as soft as sugar. This volcanic uplift, dating back 100,000 years, is home to Galápagos sea lions, sally lightfoot crabs, and shorebirds. Once back on board, relax with a welcome cocktail and meet the *Samba's* friendly, professional crew. In the evening, you will travel to Genovesa in the outer archipelago. As the moonlight beams on the dark waters, look for phosphorescence from ctenophores (comb jellies) and other plankton on the surface. If you are lucky, you may see them appearing to encapsulate dolphins in a glowing shield as they bow-ride with the boat.

Jun 3 ~ Isla Genovesa: Darwin Bay and Prince Philip's Steps

Anchor in the huge flooded volcanic caldera that created Darwin Bay. As you approach, observe the walls of the caldera, which provide wonderful ledges for the very rare Galápagos fur seals and nesting sites of Red-billed Tropicbirds. You will hike up a stony stairway known as Prince Philip's Steps for great views of Red-footed and Nazca Booby colonies on the way to the Wedge-rumped (Galápagos) Storm-Petrel colony. The island's largest Red-footed Booby nesting site is located here too. Keep an eye out for the elusive Short-eared Owl that hunts for Storm-Petrels during the day.

After your first snorkeling of the trip, you'll end your day with excellent views of Red-footed Boobies and Great Frigatebirds nesting with unparalleled density. Following the cliff edge, photograph and observe incoming boobies and frigatebirds. Frigatebirds are ceaseless with aerial displays of kleptoparasitism as they "dog-fight" along the cliffs for scarce nesting material. Genovesa's four species of Darwin's finches – Common Cactus-Finch, Green Warbler-Finch, Gray Warbler-Finch, and Large Ground-Finch – show huge variation in bill size, and you can find all four species here (one of the most outstanding sites that you will visit for Darwin's finches along with the Highlands of Santa Cruz). Unlike trips with shorter itineraries, you'll have the luxury of anchoring in the calm waters of Darwin Bay for the night.



Red-footed Booby
© Eddy Thys

Jun 4 ~ Isla Marchena: Punta Mejía and Playa Negra

You will have the rare opportunity to visit Marchena, making your experience truly unique. Although landings are not permitted, it is one of the best places to snorkel with tropical fish, rays, sea turtles, sharks, and eels. You may also find hermatypic (reef-building) coral formations here, an uncommon sight in the rest of the archipelago. During your navigation to and from Marchena, you sail through some of the most whale-rich waters in the region, so keep your eyes on the horizon and your binoculars ready!

Jun 5 ~ Isla Isabela: Punta Albermarle and Punta Vicente Roca

Punta Albermarle is not commonly visited, but home to one of the loveliest Flightless Cormorant colonies in the Galápagos. This landing is your first endeavor on Isabela, by far the largest in the archipelago.

The northwest tip of Isabela, called Punta Vicente Roca, sits at the edge of a sharp drop into deep, nutrient-rich waters. You may see Galápagos Penguins, Brown Noddies, sea turtles, marine iguanas, Blue-footed and Nazca Boobies, marine mammals, and the bizarre-looking sunfish (*Mola mola*).



Green Sea Turtle

© Cheesemans' Ecology Safaris

En route to Fernandina, keep your eyes out for whales in the cold, deep water on the western side of the archipelago. These waters offer the chance to see orcas, pilot whales, and larger species such as sperm whales. A study by Hal Whitehead, with the help of World Wildlife Fund, found sperm whales particularly abundant west of Isabela where the subsurface Cromwell Current meets land and provides oxygen and nutrient-rich upwellings that supports a high density of squid that they feed on.

Jun 6 ~ Isla Fernandina then back to Isla Isabela

Across the calm Canal Bolivar, separating Isabela from Fernandina, sits Punta Espinoza, one of the most wildlife-rich sites of the trip. Fernandina, the youngest of the Galápagos Islands, is one of the world's most pristine islands because no known introduced animals have become established here. You'll have the unique opportunity to observe and photograph marine iguanas sunbathing in piles by the hundreds. The famous Flightless Cormorant also inhabits this island along with Galápagos Penguins, lava lizards, and pelicans. Take a walk along the relatively young basalt (lava rock) to find lava cactus (*Brachycereus nesioticus*), the only species in its genus, growing directly out of what still seems like fresh lava. To protect the algae-covered coastline that marine iguanas depend on for food, snorkeling is no longer allowed.



Galapagos Penguins

© Cheesemans' Ecology Safaris

This afternoon, you head back to Isabela for a very interesting landing at Urbina Bay. In 1954, this portion of Isabela lifted out of the sea so suddenly that fish and sea turtles were literally trapped high and dry on a freshly changed coastline. You will explore this unusual site to examine evidence of the geologic forces that continue to shape these islands. Along your walk, you will find rocks full of bleached shells and massive coral heads now far from the sea. Large iguanas, both land and marine, live here as well as a few giant tortoises, the species for which the Galápagos Islands were named. You will snorkel in some of the coldest water of the trip but, thankfully, your full-length wetsuit will provide insulation as you discover the underwater world.



Land Iguana

© Cheesemans' Ecology Safaris

Jun 7 ~ Isla Isabela: Elizabeth Bay and Punta Moreno

Your morning begins with a visit to Elizabeth Bay, one of the most spectacular locations for panga (small boat) cruising. You cruise with the swimming sea turtles in this paradise, following channels through the verdant green mangrove forests. The endemic Flightless Cormorant and the Galápagos Penguin are in their prime habitat in these cold, rich waters. Then you travel to the wildly stark landing site of Punta Moreno (Dark Point) where raw basalt coats the landscape and rises into the slopes of the shield volcanoes of Sierra Negra and Cerro Azul. Yet amid the stark, seemingly sterile landscape, you'll discover rich lagoons full of life. This evening, you'll travel through more nutrient-rich waters excellent for whale watching.

Jun 8 ~ Isla Floreana: Post Office Bay and Champion Islet

After breakfast, you'll stop briefly at Post Office Bay, where you can continue the whalers' tradition of dropping a letter or postcard in the box and taking one to hand deliver to someone else. The fantastic landscape of the Floreana highlands is decorated with lichens and epiphytes, while the waters around the island are great for dolphins so keep your eyes open! These waters are also rich with seabirds, such as Waved Albatross, three species of Storm-Petrels, Galápagos Shearwaters, and large flocks of diving boobies. You'll spend time visiting Champion Islet off the coast of Floreana before navigating to Santa Cruz Island for a quiet dinner in Academy Bay.



Giant Tortoise

© Cheesemans' Ecology Safaris

Jun 9 ~ Isla Santa Cruz: Highlands and Charles Darwin Research Station

Upon reaching Santa Cruz, you'll anchor in Academy Bay beside the bustling small town of Puerto Ayora, the islands' primary population center. You'll travel to the Santa Cruz highlands to seek out elusive island endemics in beautifully unique habitats. You will explore Los Gemelos, two incredible volcanic sinkholes surrounded by *Scalesia* forest. The elegantly tall *Scalesia* trees evolved from beach composites, making it essentially the world's largest daisy. In the highlands you may see the shy Galápagos Rail, Short-eared Owl, Large and Small Tree-Finches, Vegetarian Finch, and the

famous tool-using Woodpecker Finch. You will also walk through a lava tube left over from Santa Cruz's active volcanic island-building days.

You return to Puerto Ayora in the afternoon to visit the Charles Darwin Research Station, the center of evolutionary science and conservation in the Galápagos. Your visit includes the opportunity to see the resident tortoises and enjoy an intimate look at the captive breeding programs whose goal is to return the Galápagos to a more pristine, pre-colonization state. This is one of your best opportunities to photograph tortoises up close.

Jun 10 ~ Isla Floreana: Punta Cormorant, Devil's Crown, and Baroness Lookout

In the morning, you will land behind Punta Cormorant for a walk to the Flamingo Lagoon in search of shorebirds and a few flamingoes. The plant life here is unique and includes another species of the endemic composite *Scalesia*. After returning to the *Samba*, you will sail to one of the best spots in the world for snorkeling – Devil's Crown. You normally see rays, sea turtles, surgeonfish, parrotfish, jacks, wrasses, and many other tropical fish. Floreana also holds compelling human history that includes pirate caves, European settlers, the islands' first citizen birth, and unexplained disappearances. Experience a piece of this history with a visit to Baroness Lookout.



Waved Albatross
© Eddy Thys

Jun 11 ~ Isla Española: Punta Suárez with Waved Albatross and Gardner Bay

Punta Suárez is unique beyond description and as rich as any spot in the Galápagos Islands. You'll find huge numbers of breeding birds and iguanas, and most significantly, the majority of the world's nesting Waved Albatross. Young adults and birds that recently pair will court each other, a most enticing expression of the lifelong bond that breeding and survival depend upon – an unforgettable site to observe! You will also find the fearless Española Mockingbird, Blue-footed and Nazca Boobies, Swallow-tailed Gull, Galápagos Hawk, marine iguana, lava lizard, and Galápagos sea lion. The seascapes are spectacular, particularly where the waves force water through a blowhole spouting up to 75ft high.

This afternoon, you'll sail to Gardner Bay, one of the most beautiful beaches in the Galápagos. A nearby snorkel is likely to find you in the water with playful sea lions. Galápagos sea lions populate the surf while the remarkably brave Española Mockingbird may peck your water bottle for water. Enjoy photographing shorebirds and sea lions, looking for the Large Cactus-Finch, or walking along the beautiful beach.



Yellow-tailed Surgeonfish
© Cheesemans' Ecology Safaris

Jun 12 ~ Isla San Cristóbal: Punta Pitt, Cerro Brujo, and Isla Lobos

One of the oldest islands is home to Puerto Baquerizo Moreno, the capital and second largest population in the Galápagos Province. In the morning you'll have an opportunity to stretch your legs at the geologically striking Punta Pitt and examine some of the island's vegetation, which includes endemic flowering plants such as *Calandrinia galapagosa* (a plant that resembles a small baobab and is in the Miner's Lettuce family) and *Lecocarpus darwinii* (a plant in the Sunflower family). Make a stop at Cerro Brujo, an eroding tuff cone with a beautiful white sand beach and impressive volcanic landscape. Then travel along the north coast for some excellent wildlife and snorkeling at Isla Lobos. Look for frigatebirds, sea lions, sea turtles, Blue- and Red-footed Boobies, tropicbirds, marine iguanas, Swallow-Tailed Gulls, and dolphins.

Jun 13 ~ Isla Santa Fé: Barrington Bay, Isla Plaza Sur

This morning, you'll land on Santa Fé Island. The short hike from the beach to a low plateau rewards you with great views and the *Scalesia* that thrives near a large forest of the amazing giant prickly pear cactus (*Opuntia* spp.). Search the cacti for Santa Fé land iguanas, which are a separate species from the others in the Galápagos and can grow up to 5ft in length!

The small yet incredible island of Plaza Sur (South Plaza) is your afternoon destination. This beautiful island is home to many land and marine iguanas. The colorful landscape is covered with reds and greens of *Portulaca* that may have yellow flowers the iguanas enjoy eating. In the giant prickly pear cactus, you can compare the Common Cactus-Finch alongside Small and Medium Ground-Finches. At the top of the island bachelor sea lions escape from the competition of stronger males as Red-billed Tropicbirds fly gracefully by.



Blue-footed Boobies
© Cheesemans' Ecology Safaris

Jun 14 ~ Sombrero Chino Islet and Isla Bartolomé: Pinnacle Rock

If the light is good in the early morning, you'll visit the surreal landscape of Sombrero Chino (Chinese Hat), a symmetrical cinder cone. Lava tubes run like petrified rivers and white sand from eroded coral surrounds the black rock. This afternoon, land at Bartolomé and climb to the 360ft-high summit for a gorgeous, iconic view of Pinnacle Rock and the surrounding bays. Then land on the beach for a short walk through mangroves and dune vegetation. Galápagos Penguins are often present in small numbers near Pinnacle Rock so you will have a decent chance to snorkel with or near the penguins, and maybe even whitetip reef sharks (harmless but exciting)! Also enjoy colorful starfish, tropical fish, and amazing underwater lava formations.

Jun 15 ~ Isla Santiago: James Bay and Isla Rábida

This morning you'll land at James Bay on the western side of Santiago. During low tide, explore the tidal pools that lead you to Fur Seal Grotto, where you are likely to find Galápagos fur seals swimming in emerald pools of the collapsed lava tubes.

In the afternoon you'll head to the islet of Rábida, with deep ochre red beaches creating a striking landscape. Sea lions playing in the surf make for splendid photo subjects against the red sand in the late afternoon light. Tonight, you head back east to North Seymour, just off the northern tip of Baltra. Sadly, this will be your final evening aboard the *Samba*.

Jun 16 ~ Isla Seymour Norte, disembark, fly to Quito

You'll enjoy the last landing site teeming with wildlife and wander past many breeding Blue-footed Boobies and a large colony of Magnificent Frigatebirds. Hopefully, you'll find males of both species in full display, the boobies sky-pointing and showing off their bright blue feet as they dance and the frigates calling for females with their wings spread wide and their dramatic red throat pouches inflated – an unforgettable sight! You also have the chance to see Galápagos sea lions, marine iguanas, Striated Herons, Brown Noddies, Swallow-tailed Gulls, and Lava Gulls. The endemic palo santo and low, bushy prickly pear cacti add great scenery to the amazing abundance of Galápagos wildlife. You'll reluctantly depart for Baltra and bid farewell to the *Samba* and its crew.



Galapagos Fur Seal
© Eddy Thys

Jun 17 ~ Depart for home

COSTS (ALL COSTS ARE IN US DOLLARS)

Costs and Cabin Options

Type	Description (see <i>Deck Plan</i> on page 13)	Cost per Person
Lower Deck	Double occupancy, twin-sized upper and lower beds, private bath, and drawers for storage.	\$12,350
Upper Deck	Double occupancy, double bed, private bath, windows that open, closet, and drawers for storage.	\$13,500

Costs are per person, depending on cabin type, double occupancy, not including airfare, singles extra. See *Included* and *Not Included* sections for more details.

If you are a single traveler, we will try to find a roommate for you, but if we cannot pair you with a roommate, we will not charge you a single supplement. If space is available, some cabins can be booked as a single by adding **90%** over the listed cabin cost.

We cannot guarantee a specific cabin number, but if changes occur, we will assign a cabin of equal or greater value.

Payment Schedule

Payment	Due Date	Amount per Person
Deposit	Due now to reserve your space	\$500
Final	December 21, 2025	Remaining Balance

Payments are due based on the schedule above. All reservations require a deposit to confirm reservation of your space.

Cancellations

Refunds are given depending on the time left before departure according to the following table. Through October 20, 2025, the cancellation fee of \$300 per person can be applied toward another trip if reserved within six months of the canceled trip's departure date. Cancellations are non-transferable.

Dates	Forfeited Amount per Person
On or before October 20, 2025	\$300 (see terms above)
October 21 to November 20, 2025	10% of trip cost
November 21 to December 20, 2025	40% of trip cost
On or after December 21, 2025	100% of trip cost

Included

- Carbon offsets for the duration of this trip.
- All leaders, transport, landing fees, and permits for all activities unless described as optional.
- Accommodations on mainland Ecuador for the nights of May 30 through Jun 1 and Jun 16.
- Fourteen nights on board the *Samba*.
- Meals from breakfast on May 31 through breakfast on Jun 17, except meals listed in *Not Included* section.
- Complimentary hotel airport shuttle between the Quito Airport and the Holiday Inn Quito Airport.
- Snorkel gear and full-length wetsuit on the *Samba*.
- The Galápagos National Park Entrance Fee and Transit Control Card.
- The Government of Ecuador fuel tax, that applies to most Galápagos vessels, does not apply to the *Samba* because it is a smaller, locally based, fuel-efficient vessel, using less than 3,000 gallons of diesel per month.
- Trip Planning Materials – information about entry requirements, flights, packing, gratuities, etc.

Not Included

- Carbon offsets for your flights to/from this trip.
- All airfare, airport and departure taxes, and excess baggage fees. Round-trip airfare is approximately \$500 to \$850 between the US and Quito, depending on origin, plus approximately \$650 for round-trip flights between Quito and Baltra.
- Passport and visa fees.
- Lunch and dinner on Jun 16.
- Extra hotel nights.
- Gratuities – tipping is always discretionary. However, we suggest budgeting about \$760 to \$870 total per participant.
- Mandatory [emergency evacuation insurance](#).
- Optional [trip cancellation insurance](#).
- Items of a personal nature such as laundry, telephone calls, medical costs or hospitalization, room service, alcoholic and other beverages, items not on the regular menu, etc. If you have special dietary needs, please indicate them on your Reservation Form.

SIGN UP

Please contact us first to check availability, reserve your space, and obtain a Reservation Form. To confirm your reservation, we require a deposit and signed form from each participant.

[Cheesemans' Ecology Safaris](#)

Email: info@cheesemans.com

WhatsApp: (408) 741-5330 | Skype: CheesemansEcologySafaris

Phone: (800) 527-5330 or (408) 741-5330

OTHER DETAILS

Climate

Average temperatures range from the low to mid-60s°F (15 to 18°C) at night up to the 80s°F (26 to 31°C) during the day. The water temperature averages 70 to 74°F (21 to 23°C). Average temperatures during your mainland excursion range from nighttime lows in the 50s°F (10 to 15°C) to mid 60s°F (18°C) to daytime highs from mid 60s°F (18°C) to low 80s°F (26°C).

Fitness Level

Walks on shore vary from short strolls on the beach to a few miles over uneven terrain. If you are not accustomed to walking long distances, you will still enjoy most activities as your pace allows you to see, appreciate, and photograph the unique nature of the Galápagos. If you anticipate struggling with the walks, do some hiking beforehand to get in good shape. You must be comfortable going up and down stairs on board and getting in and out of the panga (small boat).

Although snorkeling is not mandatory, it is a significant part of the voyage as you are in the water every day, sometimes twice a day. Even though you do not have to have snorkeling experience, proficient swimming abilities will allow you to fully enjoy this activity. Most snorkeling will be panga-based, sometimes over deep water, which is not an ideal place to learn to snorkel, especially if you are uncomfortable or intimidated by these conditions. It's beneficial to get some experience in advance, however, the *Samba* crew will always assist you. Please contact us if you have any health concerns that may make this trip challenging.

When you fill in your Reservation Form, please respond to the following:

1. Describe how confident you feel about being in the water for at least an hour.
2. Tell us how often you carry the same gear you plan to take out in your day pack (photography gear, binoculars, etc.).
3. Tell us how you've managed walking in hot and humid conditions and sometime on rough terrain.

Motion Sickness

Don't let a fear of motion sickness keep you away! Even those who have experienced seasickness reported that the incredible wildlife and overall experience were well worth the temporary discomfort. If you are susceptible to seasickness or are concerned that you might be, please come prepared! The key to avoiding seasickness is to act before you experience nausea. Do your own research and consult your doctor before taking any medications. A good night of sleep, eating well, limiting alcohol, and using your favorite seasickness remedy is sufficient for most travelers. Find more information on our [Coping with Seasickness](#) webpage (this information is applicable to any form of motion sickness) and contact us if you have any questions.

Flights

Detailed logistical information is included in the Trip Planning Materials we will send you.

Flights you book

- Arrive in Quito, Ecuador (UIO) by 4:00pm on May 30.
- Depart from Quito, Ecuador (UIO) after 12:00am on Jun 17.

Flights we book

- The round-trip flights between Quito and Baltra; we'll add the flight cost to your final trip balance.

Terms and Conditions

Read our current [Terms and Conditions](#).

Conservation

Our company ethos has always regarded conservation as inseparable from responsible tourism. We struggle with the dilemma that traveling worldwide expends climate-changing carbon. However, we wholeheartedly believe that traveling with us will cultivate your passion for conserving our beautiful world while stimulating each destination's local economy. We encourage you to explore the various ways in which Cheesemans' operates within this context:

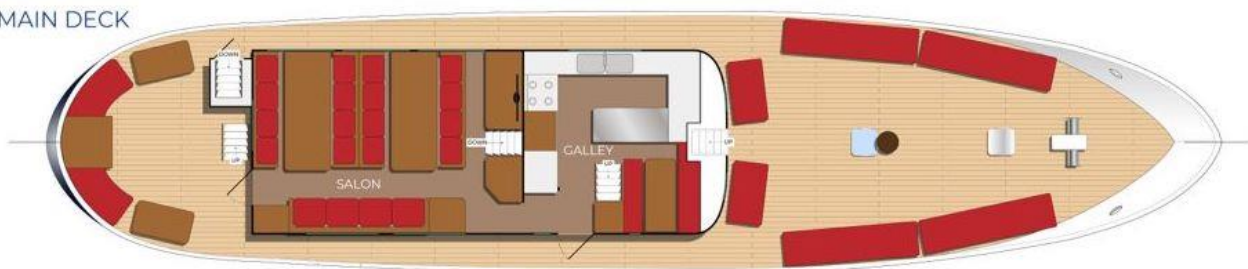
- [Ecotourism and Conservation for Galapagos](#).
- [Cheesemans' Trips are Carbon Neutral](#).
- **Offsetting your Travel to/from our Trip:** We ask you to pledge to offset the carbon emissions for your travel to and from our trips. You can purchase offsets with most airlines (Delta includes them automatically), use our handy [carbon calculator](#) and donate to Sustainable Travel International, or contribute to your favorite offsetting organization.

SAMBA DECK PLAN

TOP DECK



MAIN DECK



BOTTOM DECK



Deck plan and cabin sizes are not to scale.
See cabin descriptions under the *Costs* section on page 9.