



CHEESEMAN'S ECOLOGY SAFARIS

2059 Camden Ave. #419
San Jose, CA 95124 USA
(800) 527-5330 (408) 741-5330
info@cheesemans.com
cheesemans.com

Borneo

Primates of the Ancient Forest

May 3 to 17, 2024



Orangutan
© Charlie Ryan

SAFARI OVERVIEW

Explore an island with pristine ecosystems, home to charismatic and rare wildlife and one of the oldest rainforests in the world. Visit an orangutan sanctuary where these charming gentle giants feed and socialize. Take in breathtaking views atop the rainforest canopy while watching birds weave their way through the foliage. Cruise the Kinabatangan River with pygmy elephants bathing along its riverbanks. Participate in game drives and jungle walks through various habitats to observe orangutans, Bornean gibbons, proboscis monkeys, maroon langurs, and so much more! Discover one of the most species-rich equatorial rainforests on this unique island.

HIGHLIGHTS

- Reside in spectacular eco-conscious lodgings enveloped in nature reserves.
- Be enamored by the world's smallest bears as they snack on coconuts at the Bornean Sun Bear Centre.
- Embark on sunrise, dusk, and nocturnal river cruises for diverse wildlife encounters.
- Discover the Gomantong Caves and experience the million-bat exodus.
- Trek numerous rainforest trails in search of rare species and choose to ascend to a majestic waterfall.

LEADER: Charlie Ryan.

DAYS: 15, including estimated travel time.

GROUP SIZE: 8.

COST: \$9,505 per person, double occupancy, not including airfare (except for one-way flight from Lahad Datu to Kota Kinabalu), singles extra. See the *Costs* section on page 5.

TRANSPORTATION: Travel in open-air trucks that allow for wildlife viewing along the way. The river safaris are in private boats that are stable and wide, which are great for photography.

Date	Description	Accommodation	Meals
May 3–4	Travel to Sandakan, Sabah, Borneo.		
May 5	Arrive in Sandakan and enjoy a welcome dinner.	Sepilok Nature Resort,	D
May 6	Explore the Sepilok Forest Reserve. Visit the Orangutan Sanctuary.	Kabili-Sepilok Forest Reserve	B, L, D
May 7–9	Spend two full days of birding, jungle walks, and river safaris through the Kinabatangan Wildlife Sanctuary. Visit the Bornean Sun Bear Centre. Explore nearby Gomantong Caves and watch the bat exodus cloud the sky.	Sukau Rainforest Lodge, near Kinabatangan Wildlife Sanctuary	B, L, D
May 10–11	Head to the Tabin Wildlife Reserve with afternoon and nighttime exploration and game drives. Hike to a mud volcano for stunning views of the surrounding forest.	Tabin Wildlife Resort, Tabin Wildlife Reserve	B, L, D
May 12–14	Travel to Danum Valley and contemplate the undisturbed rainforest and its pristine, diverse ecosystems.	Borneo Rainforest Lodge, Danum Valley Conservation Area	B, L, D
May 15	Trek to search for wildlife on your final morning in Danum before flying to Kota Kinabalu.	Hyatt Centric, Kota Kinabalu	B, L, D
May 16	Continue on our Mount Kinabalu extension or fly home.		B
May 17	Arrive home.		

OPTIONS

- Continue your journey on our Mount Kinabalu extension from May 16 to 19, 2024. Experience the rich tropical lowland, the hill rainforest, and the tropical mountain forest in Kinabalu National Park. As you explore the diverse and beautiful scenery, you will have the opportunity to see a sampling of 326 bird species, including 18 Bornean endemics. See full itinerary at <https://cheesemans.com/extension/mnt-kinabalu-extension>.

LEADER



Charlie Ryan

After signing up for a volunteer program in Indonesia in 2008, Charlie was re-routed to Sabah, Borneo where he helped set up community initiative programs for the Abai village. He has resided in Sabah ever since. Charlie guides for the National Geographic Adventure groups in Borneo and helps train nature guides, providing them with first-hand knowledge and experience. He is also an avid photographer, which compliments his passion for wildlife, culture, and travel.

DETAILED ITINERARY

May 3-4 ~ Travel to Sandakan, Sabah, Borneo

Depart for Malaysian Borneo.

May 5 ~ Arrive in Borneo

Arrive in Sandakan, Sabah, Borneo. Our local agent will transfer you from the airport to the hotel, located in the forest not far outside of the city. Once settled in, your leader will give you a briefing, followed by a welcome dinner. After dinner, head out for an optional night walk in the forest to search for nocturnal wildlife. If you would like to arrive earlier, we can arrange divergent airport transfers and extra nights.

May 6 ~ Sepilok Forest Reserve

Explore the Sepilok Forest Reserve and its surroundings. Take an early morning canopy walk searching for birds and mammals unique to this region. Visit the Sepilok Orangutan Rehabilitation Centre and witness these gentle primates feed and interact in the rainforest. Enjoy day and night treks through the forest to observe wildlife including giant red flying squirrels emerging from their nests and “flying” up to 500ft between trees.

May 7-9 ~ Kinabatangan River and Wildlife Sanctuary

Take an optional dawn birdwatching walk near the lodge followed by a behind-the-scenes tour of the Bornean Sun Bear Conservation Centre with its founder.

Continue to the Kinabatangan River, home to one of the highest concentrations of wildlife in Borneo. After settling into your lodge, go on a dusk cruise in search of orangutans, hornbills, slow lorises, western tarsiers, civets, proboscis monkeys, and more.

Spend two more days in this magical location. Set out on an early morning river cruise through the panoramic hues of sunrise to explore this region's natural beauty and rich wildlife diversity. Trek through the jungle to search for wildlife. Learn from an orangutan expert. Embark on a short boat ride and transfer to the famous Gomantong Caves to spend an afternoon exploring. At dusk, see a mind-boggling bat exodus, where over one million bats emerge from the cave to feed. Cruise at night in search of nocturnal wildlife on the riverbanks.



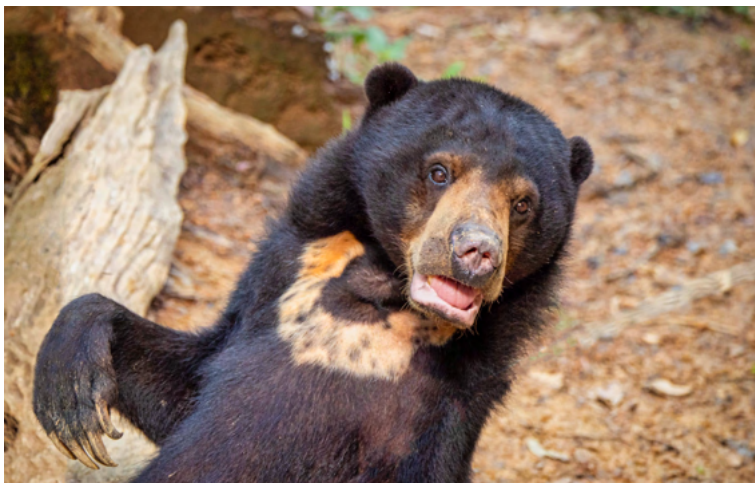
Orangutan
© Cheesemans' Ecology Safaris

May 10–11 ~ Tabin Wildlife Reserve

Drive to one of the most biodiverse regions of Borneo, the Tabin Wildlife Reserve, which boasts an impressive 220 bird species as well as the wild banteng cattle and 10 primate species. Explore the reserve in 4x4 off-road vehicles hoping to find leopard cats, marbled cats, flying squirrels, and binturong bearcats in their natural habitats. Participate in a morning trek to the mud volcano, where salt-enriched mud bubbles up and attracts many different animals. Climb an observation tower and soak in the stunning views of the surrounding forest canopies. Meet the executive director of the Borneo Rhino Alliance who will teach you about current Sumatran rhino conservation efforts. Join nightly game drives to find nocturnal wildlife.

May 12–14 ~ Danum Valley

Travel to Danum Valley, known for its 400 square miles of virtually undisturbed primary rain forest. Spend your time exploring the local nature trails on your own or with a guide. Stretch your legs with a moderately challenging hike to a nearby waterfall or go on a canopy walk in the treetops surrounding the lodge. With more than 275 recorded species, birdlife is especially diverse. Find rare species such as orangutans, pygmy elephants, clouded leopards, endemic Bornean gibbon, and endemic maroon langur. Go on a guided night walk to experience the forest when it is buzzing with activity.



Sun Bear
© Grace Chen

May 15 ~ Kota Kinabalu

Spend the morning trekking in search for wildlife on your final morning in Danum. Return to Lahad Datu (a 2.5-hour drive on dirt track) for your flight to Kota Kinabalu (a 50-minute flight). Once checked into your hotel, enjoy a dinner altogether to celebrate the incredible journey through the jungle.

May 16 ~ Join our Mount Kinabalu extension or fly home

Continue on our Mount Kinabalu extension (<https://cheesemans.com/extension/mnt-kinabalu-extension>) or relax this morning before you fly home.

May 17 ~ Arrive home

COSTS (ALL COSTS ARE IN US DOLLARS)

Cost

Type	Cost per Person
Trip Cost, double occupancy	\$9,505
Single Supplement	\$1,820

Costs are per person, double occupancy, not including airfare (except for one-way flight from Lahad Datu to Kota Kinabalu), singles extra. See *Included* and *Not Included* sections for more details.

If you are a single traveler and would like a roommate, we will try to find someone for you, but if we cannot find someone, we may charge you a single supplement. Single rooms cost extra and are subject to availability.

Payment Schedule

Payment	Due Date	Amount per Person
Deposit	Due now to reserve your space	\$500
Final	November 25, 2023	Remaining Balance

Payments are due based on the schedule above. All reservations require a deposit to confirm reservation of your space.

Cancellations

Until the Final Payment due date, deposits are refundable except for a cancellation fee of \$150 per person, which can be applied toward another trip if reserved within six months of the cancelled trip's departure date. Cancellations are non-transferrable. No refunds are given after the Final Payment due date.

Included

- Carbon offsets for the duration of this trip.
- All leaders, transport, camera fees, park entry fees, and permits for all activities unless described as optional.
- One-way flight from Lahad Datu to Kota Kinabalu.
- Transfers from Sandakan Airport to Sepilok Nature Resort on May 5 and to Kota Kinabalu Airport on May 16.
- Accommodations for the nights of May 5 through May 15.
- Meals from dinner on May 5 through breakfast on May 16.
- Non-alcoholic bottled beverages throughout the trip.
- Snacks during travel between locations.
- Incidental tipping (porters, boatmen, drivers, hotel staff, etc.).
- Lectures from an orangutan expert and from the executive director of the Borneo Rhino Alliance.
- Private access to Sun Bear Centre.
- *Mammals of Borneo* book.
- Trip Planning Materials – information about flights, packing, entry and departure requirements, airport transfers, gratuities, etc.

Not Included

- Carbon offsets for your flights to/from this trip.
- All airfare (except flights listed as included), airport and departure taxes, and excess baggage fees. Airfare is approximately \$1,200 to \$2,400 from the US to Sabah, Borneo, and back to US from Kota Kinabalu, depending on origin.
- Passport and visa fees.
- COVID tests.
- Divergent airport transfers (arranged by us) and extra hotel nights.
- Gratuities – tipping is always discretionary. However, we suggest budgeting about \$350 total per participant.
- Emergency evacuation insurance and trip cancellation insurance. For more information see <https://cheesemans.com/travel-insurance>.
- Items of a personal nature such as laundry, telephone calls, medical costs or hospitalization, room service, alcoholic beverages, items not on the regular menu, etc. If you have special dietary needs, please indicate them on your Reservation Form.

SIGN UP

Please contact us first to check availability, reserve your space, and obtain a Reservation Form. To confirm your reservation, we require a deposit and signed form from each participant.

Cheesemans' Ecology Safaris

Email: info@cheesemans.com

Website: www.cheesemans.com

WhatsApp: (408) 741-5330 | Skype: CheesemansEcologySafaris

Phone: (800) 527-5330 or (408) 741-5330

OTHER DETAILS

Climate

Temperatures vary greatly. The lower altitudes are often hot, while the forests and higher altitudes can be surprisingly cool. In May, the average daytime temperature in Borneo is in the mid 80s°F (28°C), with highs in the low 90s°F (33°C); the evenings get down into the mid 70s°F (24°C). There is very high humidity in the lowlands, and it will feel much warmer. Temperatures in the forest and at higher altitudes are only slightly cooler, averaging 60 to 80°F (16 to 26°C). Although May is considered the dry season, rain is still possible.

Fitness Level

Most wildlife viewing is done from vehicles, boats, and on foot. Walks to search for wildlife are generally 2-3 hours long and along relatively flat trails, gravel roads, and single-track trails that are undulating. You have the option to split into smaller groups based on desired level of exercise. In Sepilok, Tabin, and Danum, the heat and humidity can make a 3- to 5-km walk feel like double the distance. Drinking water is imperative. Please contact us if you have any health concerns that may make this trip challenging.

Transportation

Travel in open-air trucks that allow for wildlife viewing along the way. The river safaris are in private boats that are stable and wide, which are great for photography.

Flights

Unless listed as included, airfare is not included in trip costs. Detailed logistical information and the contact information for our recommended flight-ticketing agent are included in the Trip Materials we will send you. Please let us know if you are arriving earlier or staying later, as we are happy to assist you with any extra overnights that you might want to arrange.

Flights you (or a travel agent) book: Arrive in Sandakan, Malaysia (SDK) by 3:00pm on May 5. Depart from Kota Kinabalu, Malaysia (BKI) after 12:00am on May 16. **If you are continuing on our Mount Kinabalu extension**, see the *Flights* section in its itinerary for departure information (<https://cheesemans.com/extension/mnt-kinabalu-extension>).

Flights we book for you: The one-way flight from Lahad Datu to Kota Kinabalu is included in the trip cost.

Terms and Conditions

Read our current Terms and Conditions at <https://cheesemans.com/terms-and-conditions>.

Conservation

Our company ethos has always regarded conservation as inseparable from responsible tourism. We struggle with the dilemma that traveling worldwide expends climate-changing carbon. However, we wholeheartedly believe that traveling with us will cultivate your passion for conserving our beautiful world while stimulating each destination's local economy. We encourage you to explore the various ways in which Cheesemans' operates within this context:

- **Ecotourism and Conservation for Borneo:** (<https://cheesemans.com/ecotourism-and-conservation-in-Borneo>).
- **Cheesemans' Trips are Carbon Neutral:** As of June 1, 2022, our trips are carbon neutral (<https://cheesemans.com/carbon-neutral>).
- **Offsetting your Travel to/from our Trip:** We ask you to pledge to offset the carbon emissions for your travel to and from our trips. Use this tool to calculate your emissions and purchase your carbon offset today through Sustainable Travel International, or through your favorite carbon offsetting organization (<https://cheesemans.com/carbon-calculator>).