



CHEESEMANS' ECOLOGY SAFARIS

555 North Santa Cruz Avenue
Los Gatos, CA 95030-4336 USA
(800) 527-5330 (408) 741-5330
info@cheesemans.com
cheesemans.com

Southern Africa **Namibia, South Africa, and Zambia** *Desert Dunes and Wildlife* August 6 to 22, 2021



Lion
© Scott Davis

SAFARI OVERVIEW

Travel to Namibia, South Africa, and Zambia to capture remarkable moments on your camera with professional photographer Scott Davis. Visit some of the best sites to photograph southern Africa's quintessential wildlife and its iconic landscapes. Explore regions with incredibly accessible biodiversity including Africa's Big Five (lions, elephants, rhinos, leopards, and buffalo) and many beautiful birds in South Luangwa National Park in Zambia and Sabi Sand Private Game Reserve (part of the Greater Kruger National Park system) in South Africa. Discover the picturesque red sand dunes and salt pans of Sossusvlei in the Namib Desert of Namibia. Encounter nocturnal wildlife and stargaze during evening game drives. This safari will provide you with opportunities to capture quality images of unique African wildlife and beautiful landscapes.

HIGHLIGHTS

- Study and photograph wildlife behaviors from safari vehicles and special observation blinds at South Luangwa National Park, known for large congregations of elephants, giraffes, and zebras.
- See great predators such as lions, cheetahs, leopards, African painted dogs, jackals, and hyenas.
- Explore Namibia's famous red sand dune and salt pan landscapes and hike to the top of Dune 45!
- Learn wildlife, landscape, and nighttime photography techniques from naturalist and professional photographer Scott Davis.

LEADERS: Scott Davis assisted by local resident guides.

DAYS: 17 including estimated travel time.

GROUP SIZE: 11.

COST: \$16,750 per person, double occupancy, not including airfare (except for seven internal flights). See the *Costs* section on page 5.

ACCOMMODATIONS: From modern to luxurious. For multi-night stays, enjoy very high-end camps and lodges where stunning views, modern amenities, excellent food, and extreme comfort are all prioritized.

Date	Description	Accommodation	Meals
Aug 6	Travel to Johannesburg, South Africa.		
Aug 7	Arrive in Johannesburg.	City Lodge Hotel, Johannesburg	—
Aug 8–11	Fly to Mfuwe, Zambia and transfer to Tafika Camp for three full days of game-viewing in South Luangwa National Park.	Tafika Camp, South Luangwa National Park	B, L, D
Aug 12	In the morning, wildlife watch near camp and then fly to Windhoek, Namibia.	Olive Grove Guesthouse, Windhoek	B, L, D
Aug 13–15	Fly to Sossusvlei, Namibia. Spend two-and-a-half days taking guided walks and driving through enchanting desert scenery.	Sossus Dune Lodge, Sossusvlei	B, L, D
Aug 16	Take a scenic flight to Windhoek and then fly to Johannesburg.	City Lodge Hotel, Johannesburg	B, L, D
Aug 17–20	Fly to Sabi Sand where you will enjoy early morning and evening game drives and midday safari walks.	Ulusaba Rock Lodge, Sabi Sand Private Game Reserve	B, L, D
Aug 21	Fly to Johannesburg for connecting flights homeward.		B
Aug 22	Arrive home.		

LEADER



Scott Davis

Scott is a professional photographer (www.scottdavisimages.com/) specializing in wildlife, nature, and travel. Originally trained as a wildlife and marine biologist, his research and photo assignments took him to the far corners of the globe. National Geographic, BBC, Animal Planet, and renowned magazines have used his photography. His patience for teaching and love of capturing the essence of his subjects make him one of our most popular tour leaders.

DETAILED ITINERARY

Aug 6 ~ Travel to Johannesburg, South Africa

Depart from home and travel to Johannesburg, South Africa.

Aug 7 ~ Arrive in Johannesburg

Arrive in Johannesburg where you will be greeted at the airport and transferred to your hotel.

Aug 8–11 ~ Visit South Luangwa National Park

Fly to Mfuwe, Zambia and then drive to Tafika Camp in South Luangwa National Park. You'll have game-viewing opportunities on foot, by private vehicles during daytime and nighttime, and from observation blinds. The camp's network of photography blinds is perfectly situated for wildlife observation and photography. They include a watering hole hide that elephants frequent daily.

South Luangwa is touted by many travel experts (e.g. Lonely Planet, Fodor's, TripAdvisor) as being one of the greatest wildlife sanctuaries in Africa. The Luangwa River is the most intact major river system in Africa and supports life within the park's 9,050 km². More than 60 mammal species and 400 bird species reside along the river. You'll encounter local and incredibly varied fauna, including lions, leopards, zebras, giraffes, wild dogs, and many charismatic birds like the carmine bee-eaters and gray crowned-cranes.



Hippo
© Scott Davis

During night drives in the Luangwa, you'll have opportunities to see leopards and many other nocturnal animals. You may encounter African civets, common (or small-spotted) genet, spotted hyenas, nightjars, honey badgers (ratels), and lions. On most nights you may hear hyenas and their plaintive, eerie cry – very characteristic of the African bush.

Aug 12 ~ Wildlife watching near camp

This morning enjoy wildlife action near camp. After breakfast you'll fly from Mfuwe to Windhoek, Namibia where you can explore Namibia's capital city or relax at the lodge.

Aug 13–15 ~ Explore the Sossusvlei salt pans of Namib-Naukluft National Park

Fly mid-morning from Windhoek to an airstrip near Sossus Dune Camp to begin exploring the Namib Desert. Enjoy daytime nature drives through the famed Sossusvlei region of the desert, known for its red sand dunes

and salt pans. You'll visit iconic landmarks of this region including taking a guided walk in the Sesriem Canyon, photographing and hiking up Dune 45, and exploring the Petrified Dunes where sand has turned to stone. The landscapes here vary, including canyons with narrowly carved corridors, salt pans with old acacia trees, and vast seas of red sand dunes, making this region a natural marvel with excellent photography opportunities at every turn!

Aug 16 ~ Overnight in Johannesburg

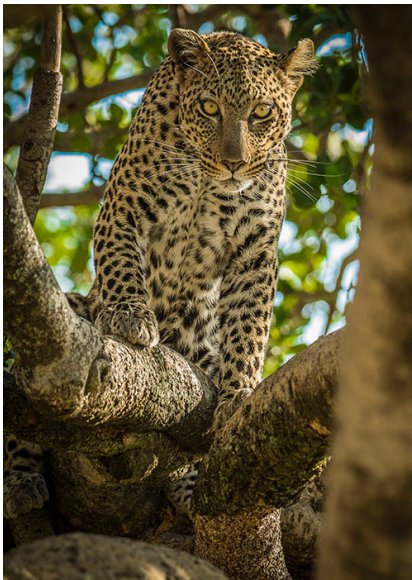
After breakfast, enjoy your last day in Namibia with a scenic flight to Windhoek, and then fly to Johannesburg.



Salt Pans
© Scott Davis

Aug 17–20 ~ Sabi Sand Private Game Reserve

In the morning, you'll fly to Sabi Sand Private Game Reserve, part of the Greater Kruger National Park. Sabi Sand was once agricultural land where farmers bored holes into the ground for water wells. Those water wells now serve as watering holes, bringing the resident wildlife together to congregate en masse and providing you with an excellent place to watch for predators hunting their thirsty prey.



Leopard
© Scott Davis

Sabi Sand is well-known for its leopards – these particular animals are accustomed to the vehicles and so many of their behaviors, including hunting, are more easily observable here than in other regions. You may also photograph cheetah, Burchell's zebra, giraffe, common wart-hog, and honey badger. You will also have the opportunity to see birds such as the ostrich.

Take early morning game drives to see zebras grazing in the open plains, elephant herds gathering near the water, giraffes pacing across the landscape, and lions resting in the shade. You'll also have opportunities to get up close and personal with the animals during walking safaris guided by armed rangers and experienced trackers. In the evening, after dinner at the lodge or in the bush, join game drives in search of the elusive nocturnal wildlife and enjoy the magnificent stargazing that these remote skies offer.

Aug 21 ~ Fly back to Johannesburg

Fly back to Johannesburg in the morning and continue on your flights homeward.

Aug 22 ~ Arrive home

COSTS (ALL COSTS ARE IN US DOLLARS)

Cost

Type	Cost per Person
Trip Cost, double occupancy	\$16,750

Costs are per person, double occupancy, not including airfare (except for seven internal flights). See *Included* and *Not Included* sections for more details.

If you are a single traveler, we will find a roommate for you, but if we cannot find you a roommate, we may charge you a single supplement.

Payment Schedule

Payment	Due Date	Amount per Person
Deposit	Due now to reserve your space	\$500
Second	September 15, 2020	\$5,000
Final	February 15, 2021	Remaining Balance

Payments are due based on the schedule above. All reservations require a deposit to confirm reservation of your space.

Cancellations

Until the Final Payment due date, deposits are refundable except for a cancellation fee of \$150 per person, which can be applied toward another trip if reserved within six months of the cancelled trip's departure date. Cancellations are non-transferrable. No refunds are given after the Final Payment due date.

Included

- All leaders, transport, park entry fees, and permits for all activities unless described as optional.
- Seven internal flights.
- Accommodations for the nights of August 7 through 20.
- Meals from breakfast on August 8 through breakfast on August 21.
- All airport transfers, regardless of arrival or departure date.
- Trip Materials – information about flights, packing, entry and departure requirements, airport transfers, gratuities, etc.

Not Included

- All airfare (except flights listed as included), airport and departure taxes, and excess baggage fees. Round-trip airfare is approximately \$1,500 between the US and Johannesburg, depending on origin.
- Passport and visa fees.
- We can arrange extra hotel nights for an extra cost.
- Gratuities – tipping is always discretionary. However, we suggest budgeting about \$22 to \$25 per participant per day for August 8 to August 20 with our local guides (about \$286 to \$325 total per participant).
- Mandatory emergency medical and evacuation insurance. For more information see www.cheesemans.com/travel-insurance.

- Optional trip cancellation insurance. For more information see www.cheesemans.com/travel-insurance.
- Items of a personal nature such as laundry, telephone calls, medical costs or hospitalization, room service, alcoholic and other beverages, items not on the regular menu, etc. If you have special dietary needs, please indicate them on your Reservation Form.

SIGN UP

Please contact us first to check availability, reserve your space, and obtain a Reservation Form. To confirm your reservation, we require a deposit and signed form from each participant.

Cheesemans' Ecology Safaris

Email: info@cheesemans.com

Website: www.cheesemans.com

WhatsApp: (408) 741-5330 | Skype: CheesemansEcologySafaris

Phone: (800) 527-5330 or (408) 741-5330

Fax: (408) 741-0358

OTHER DETAILS

Climate

Daily temperatures in August vary from below freezing (32°F, 0°C) to about 85°F (29°C) during the day with the possibility of some rain. In the last five years, the dynamics of climate change have impacted the area with an increase in temperatures, so dress in layers.

Fitness Level

Minimal fitness level is required. Our game drives require good energy levels, as some days are long. Most travel is in open-air safari vehicles on sometimes dusty and bumpy roads. You will have opportunities for short, relaxed hikes, usually less than one mile over varied terrain (sand dunes, flat areas, hilly and grassy areas, or rocky slopes) and, at times, uphill for about 20 to 30min. Please contact us if you have any health concerns that may make this trip challenging.

Accommodations

The lodging ranges from modern to luxurious. For multi-night stays, you stay at very high-end camps and lodges where stunning views, modern amenities, excellent food, and extreme comfort are all prioritized. The lodges have restaurants, internet access, and laundry service. The rooms have en-suite bathrooms, private outdoor seating, and outdoor showers/baths – after a long day in the bush, you may appreciate a warm bubble bath with a sunset view.

Flights

Unless listed as included, airfare is not included in trip costs. Detailed logistical information and the contact information for our recommended flight-ticketing agent are included in the Trip Materials we will send you. Please let us know if you are arriving earlier or staying later as we are happy to assist you with any extra overnights that you might want to arrange.

Flights you (or a travel agent) book: Arrive in Johannesburg, South Africa (JNB) by August 7. Depart from

Johannesburg, South Africa (JNB) late in the afternoon on August 21.

Flights we book for you: Seven internal flights are included in the trip cost.

Terms and Conditions

Read our current Terms and Conditions at <https://cheesemans.com/terms-and-conditions>.

Conservation

Cheesemans' Ecology Safaris is passionate about conserving the precious regions that we travel to and supports many conservation efforts. By visiting these areas, we contribute to sustainable conservation of these valuable wildlife habitats. We urge you to support conservation organizations that protect and restore natural habitats and write letters to tourism and government agencies to promote work in preserving wildlife.

We aim to make all our trips carbon neutral by splitting the cost of carbon offsetting with our participants. For your convenience, the optional donation amount for your half of the carbon offset will be indicated on your invoice. We source high quality offsets through CarbonTree Conservation Fund, a non-profit we helped found, supporting pioneering forest conservation in the Rio Bravo Reserve in Belize, a Nature Conservancy project (www.nature.org/en-us/about-us/where-we-work/latin-america/belize/rio-bravo-conservation-area/).