



CHEESEMANS' ECOLOGY SAFARIS

2059 Camden Ave. #419
San Jose, CA 95124 USA
(800) 527-5330 (408) 741-5330
info@cheesemans.com
cheesemans.com

Easter Island Extension

Mysterious Moai

February 23 to 28, 2022



Moai

© Far South Expeditions

EXTENSION OVERVIEW

Join us on an exciting extension where you'll stroll amongst the monolithic *moai* statues of Easter Island, carved from basalt lava by Polynesian settlers centuries ago. Visit abandoned settlements, explore ceremonial centers, and take a boat ride for a different perspective of the island, where you might see petroglyphs painted high on the cliffs above. Come along for an unforgettable journey of exploration into the history of Easter Island (Rapa Nui).

HIGHLIGHTS

- Learn about Easter Island's *moai* statues and the *tangata manu* competition where rulership of Easter Island was defined through a ritual race for a bird egg.

TRIP OPTION: This is a post-trip extension to our Chile and Argentina trip from February 11 to 24, 2022 (<http://cheesemans.com/trips/chile-argentina-feb2022>).

LEADER: Josefina 'Josie' Nahoe Mulloy.

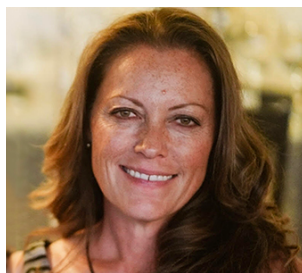
DAYS: Adds 3 days to the main trip to total 17 days, including estimated travel time.

GROUP SIZE: 8 (minimum of 4 required).

COST: \$2,230 per person, double occupancy, not including airfare, singles extra. See the *Costs* section on page 4.

| Date | Description | Accommodation | Meals |
|--------|---|----------------------------------|---------|
| Feb 23 | Fly from Punta Arenas to Santiago from our Chile and Argentina trip. | Santiago Airport Holiday Inn | D |
| Feb 24 | Fly to Easter Island and tour Ahu Akivi and Ahu Tahai. | Hotel Altiplanico, Easter Island | B, L, D |
| Feb 25 | Spend a full day exploring historical sites. | | |
| Feb 26 | Explore Orongo village and Ahu Vinapus and take boat ride. | | |
| Feb 27 | Free morning to visit local crafts market and anthropological museum. Fly to Santiago for flights home. | | B |
| Feb 28 | Arrive home. | | |

LEADER



Josefina 'Josie' Nahoe Mulloy

Josie is the daughter of a Rapa Nui father and an American mother, and granddaughter of American archeologist William Mulloy who is responsible for the majority of the island's archeological restoration. She offers unique perspective, insight, and personal history to Easter Island. After growing up and receiving an education in the US, she relocated to Easter Island and shortly thereafter received Top Guide of the Year in all of Chile. She is regarded not only as the one of most insightful guides on the island, but also the most fun, and she looks forward to sharing the mystery of Rapa Nui with you.

DETAILED ITINERARY

Feb 23 ~ Travel from our Chile and Argentina trip

Fly from Punta Arenas to Santiago from our Chile and Argentina trip (<http://cheesemans.com/trips/chile-argentina-feb2022>). Your hotel is conveniently located right outside the airport, so once you get your luggage and go through customs, walk across the street to check in.

Feb 24 ~ Fly to Easter Island and tour Ahu Akivi and Ahu Tahai

Fly 2,360mi across the Pacific Ocean to Easter Island, where our local guide will meet you to begin exploring this famous island. The island is compact, taking less than an hour to drive from one end to the other. Historic sites are abundant around the island, each featuring unique stories and photo opportunities. Spend the afternoon touring Ahu Akivi and Ahu Tahai.

Ahu Akivi

One of the few *ahu* (platform) built in the interior of the island rather than on the coast, Ahu Akivi's seven *moai* look out towards the ocean, directly facing the sun during the spring and autumn equinox. Oral tradition says the *moai* at Ahu Akivi represent the young explorers sent to investigate the island before it was colonized.

Ahu Tahai

Located within walking distance of your lodge, this site contains three *ahu* (from north to south): Ko Te Riku (*moai* with restored eyes), Tahai, and Vai Ure.

Feb 25 – Spend a full day exploring historical sites

You'll spend a full day touring Rano Raraku and Puna Pau, Ahu Tongariki, and Ahu Akahanga.

Rano Raraku and Puna Pau

Rano Raraku is an extinct volcano that contains Puna Pau, the quarry from which all *moai* were carved. Half-finished or half-buried statues lie all around the site, each with its own unique design or face.

Ahu Tongariki

The largest restored *ahu* on Easter Island with fifteen *moai*, including the heaviest ever erected on the island.

Ahu Akahanga

This *ahu* is the burial site of the first king of Easter Island. In most *ahu*, the *moai* lie face down, but here you can find them both face-up and face-down.

Feb 26 ~ Explore Orongo village and Ahu Vinapus and take boat ride

Spend the morning at Orongo Village and Ahu Vinapu, and, weather permitting, enjoy an afternoon boat trip to the *motus* (islets).

Orongo village and petroglyphs

Situated high on a cliff overlooking the *motus* on the southwest end of Easter Island, Orongo is a stone village, ceremonial center, and traditional site of the *tangata manu*, a dangerous annual competition between the clans of Easter Island. Last held in 1867, the *tangata manu* competition began when the islanders expected sooty terns to return to nest. Each clan leader chose a member to race and be the first to get and return a sooty tern egg. Contestants scrambled down the steep rock face, braved sharks while swimming across to Motu Nui, then waited on the islet, often for days or weeks, until a sooty tern laid an egg. Once the first egg was found, the contestant would take the egg and race back – all while keeping the egg intact in a reed basket attached to his forehead. The winning clan leader gained prestige and power as the birdman, shaved his head, and lived in ceremonial seclusion for a year, while his clan gained sole rights to collect the eggs and birds of Motu Nui for the season. Look along the cliff for petroglyphs revealing the famous birdman motif.

Ahu Vinapu

The ceremonial center of Vinapu includes one of the larger *ahu* on the island, which has extraordinary stonemasonry consisting of large and carefully fitted slabs of basalt, reminiscent of those of the Incas in Peru.

Feb 27 ~ Free morning before flying to Santiago

Enjoy a free morning to peruse the local craft or main street markets for souvenirs, visit the Sebastian Englert anthropological museum, or walk along the coast. Then fly back to Santiago to connect with flights home.

Feb 28 ~ Arrive home**COSTS (ALL COSTS ARE IN US DOLLARS)**

Cost

| Type | Cost per Person |
|-----------------------------|-----------------|
| Trip Cost, double occupancy | \$2,230 |
| Single Supplement | \$490 |

Costs are per person, double occupancy, not including airfare, singles extra. See *Included* and *Not Included* sections for more details.

Payment Schedule

Payment is due with your main trip's final payment; see its trip itinerary for details at <http://cheesemans.com/trips/chile-argentina-feb2022>.

Cancellations

Cancellations are non-transferrable. No refunds are given after the Final Payment due date.

Included

- All leaders, transport, park entry fees, and permits for all activities unless described as optional.
- Accommodations for the nights of February 23 through February 26.
- Meals from dinner on February 23 through breakfast on February 27.
- On February 23 and February 24, your hotel is across the street from the Santiago Airport, so you may walk to the hotel or airport. Transfers between your hotel and Mataverí International Airport on Easter Island on February 24 and February 27.
- Boat trip.
- Bottled water.
- Trip Materials – information about flights, packing, entry and departure requirements, airport transfers, gratuities, etc.

Not Included

- One-way flight from Punta Arenas to Santiago (approximately \$180) and round-trip flights between Santiago and Easter Island (approximately \$1,750); we'll add the flight cost to your final trip balance.
- Gratuities – tipping is always discretionary. However, we suggest budgeting about \$10 to \$15 per participant per day for February 24 to 26 with our leaders (about \$30 to \$45 total per participant).
- Emergency medical and evacuation insurance and trip cancellation insurance. For more information see www.cheesemans.com/travel-insurance.
- Items of a personal nature such as laundry, telephone calls, medical costs or hospitalization, room service, alcoholic and other beverages, items not on the regular menu, etc. If you have special dietary needs, please indicate them on your Reservation Form.

SIGN UP

Please contact us first to check availability, reserve your space, and obtain a Reservation Form. To confirm your reservation, we require a deposit and signed form from each participant.

Cheesemans' Ecology Safaris

Email: info@cheesemans.com

Website: www.cheesemans.com

WhatsApp: (408) 741-5330 | Skype: CheesemansEcologySafaris

Phone: (800) 527-5330 or (408) 741-5330

OTHER DETAILS

Climate

On Easter Island, it will be warm and slightly humid, with a cooling ocean breeze. Temperatures average in the low 80s°F but could reach into the 90s°F with little chance of rain.

Seasickness

Don't let a fear of seasickness scare you away! We have one boat trip, so it's a good idea to bring medication if you get seasick or are unsure. Read our suggestions for coping with seasickness at www.cheesemans.com/seasickness and contact us if you have any concerns.

Flights

Unless listed as included, airfare is not included in trip costs. Detailed logistical information and the contact information for our recommended flight-ticketing agent are included in the Trip Materials we will send you. Please let us know if you are arriving earlier or staying later as we are happy to assist you with any extra overnights that you might want to arrange.

Flights you (or a travel agent) book: Arrive in El Calafate, Argentina (FTE) by 7:00pm on February 12 in time for dinner. Depart from Santiago, Chile (SCL) after 9:30pm on February 27.

Flights we book for you: The one-way flight from Punta Arenas to Santiago and round-trip flights between Santiago and Easter Island; we'll add the flight costs to your final trip balance.

Terms and Conditions

Read our current Terms and Conditions at <https://cheesemans.com/terms-and-conditions>.

Conservation

Cheesemans' Ecology Safaris is passionate about conserving the precious regions that we travel to and supports many conservation efforts. By visiting these areas, we contribute to sustainable conservation of these valuable wildlife habitats. We urge you to support conservation organizations that protect and restore natural habitats and write letters to tourism and government agencies to promote work in preserving wildlife.

We aim to make all our trips carbon neutral by splitting the cost of carbon offsetting with our participants. For your convenience, the optional donation amount for your half of the carbon offset will be indicated on your invoice. We source high quality offsets through CarbonTree Conservation Fund, a non-profit we helped

found, supporting pioneering forest conservation in the Rio Bravo Reserve in Belize, a Nature Conservancy project (www.nature.org/en-us/about-us/where-we-work/latin-america/belize/rio-bravo-conservation-area/).