



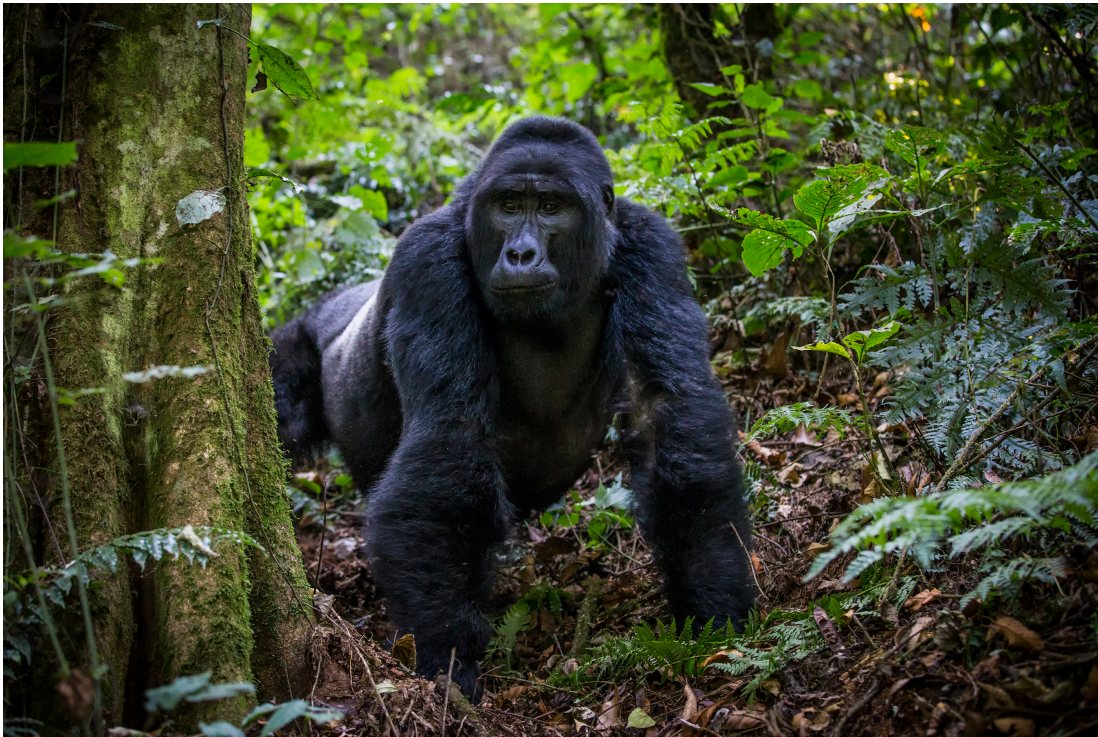
## CHEESEMANS' ECOLOGY SAFARIS

555 North Santa Cruz Avenue  
Los Gatos, CA 95030-4336 USA  
(800) 527-5330 (408) 741-5330  
info@cheesemans.com  
cheesemans.com

### Uganda

#### *Primate Encounters*

October 25 to November 7, 2019



## SAFARI OVERVIEW

---

Completely immerse yourself in the fascinating world of the rare and elusive mountain gorillas and chimpanzees on this special great ape expedition. See through the eyes of Jane Goodall and Dian Fossey as you get up-close and personal with these incredibly complex and social animals, all within the boundaries of Uganda's forest habitats. Special access permits in Kibale National Park grant you full days with the Chimpanzees (most visitors have only two hours), giving ample photographic opportunities. For two-and-a-half days, immerse yourself among chimpanzee families, many times within just a few feet of them, witnessing and photographing intimate moments while chimps wake up, groom, forage, interact, and play together. Spend two days game driving in search of the tree-climbing lions of Queen Elizabeth National Park and a host of other African species. Delve into Bwindi Impenetrable Forest, a UNESCO World Heritage Site; for three days, you will hike into the mountainous jungle habitat to locate and observe the rare and special mountain gorillas. Your time will be spent observing the daily routines of these gentle giants while they feed, socialize, parent, and trudge through the forest. You will leave with amazing images of Uganda and beautiful portraits of these remarkable creatures, but above all, you'll leave with a sense of awe and wonder from the close encounters with our nearest ancestors.

## HIGHLIGHTS

- Up-close encounters with the mountain gorillas in Bwindi Impenetrable Forest.
- Two-and-a-half days with chimpanzees in Kibale National Park to observe and photograph behaviors.
- Enjoy a specially planned opportunity to join researchers as they track African Lions in Queen Elizabeth National Park.
- Our exclusive small group keeps encounters private and without interference by other visitors.
- Improve your photography skills with biologist-turned-professional-photographer Scott Davis.

**LEADERS:** Scott Davis and local guides.

**DAYS:** 14, including estimated travel time.

**GROUP SIZE:** 7.

**COST:** \$12,500 per person, double occupancy, not including airfare (except chartered flight from Bwindi to Entebbe), singles extra. See the *Costs* section on page 4.

**CONDITIONS:** This is a **non-smoking tour** for people who are very interested in spending the maximum time in nature. See the *Conditions* section on page 7.

Date	Description	Accommodation	Meals
Oct 25	Travel day to Entebbe, Uganda.		
Oct 26	Arrive in Entebbe.	Protea Hotel, Entebbe	D
Oct 27–30	Drive to Kibale National Park and then spend the next two-and-a-half days tracking Chimpanzees and observing behaviors.	Ndali Lodge, Ndali	B, L, D
Oct 31–Nov 1	Drive to Queen Elizabeth National Park and explore during morning and afternoon game drives with special Lion tracking.	Ishasha Wilderness Camp, Queen Elizabeth National Park	B, L, D
Nov 2–5	Drive to Bwindi Impenetrable Forest, then spend the next three days tracking gorillas.	Sanctuary Gorilla Forest Camp, Bwindi	B, L, D
Nov 6	Fly back to Entebbe for connecting flights homeward.	Protea Hotel, Entebbe (Dayroom)	B, L
Nov 7	Arrive home.		

## LEADER

### Scott Davis

Scott is a professional photographer specializing in wildlife and nature, travel and lifestyle, and editorial imagery. Originally trained as a wildlife and marine biologist, Scott's research and photo assignments have taken him to far corners of the globe and all seven continents. His photographic work has appeared in numerous national and international magazines and newspapers, commercial websites, prestigious stock agencies, and corporate reports. See examples of his images on his website at [www.scottdavisimages.com](http://www.scottdavisimages.com)



## DETAILED ITINERARY

---

### **Oct 25 ~ Travel day to Entebbe, Uganda**

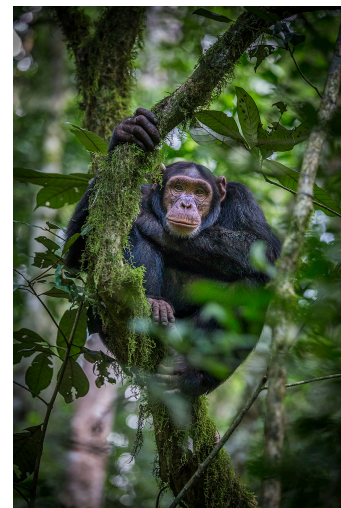
If you are traveling from the US or similar distance, you will likely have to depart home today.

### **Oct 26 ~ Arrive in Entebbe**

Arrive in Entebbe by this evening. Upon arrival at the airport, you will be transferred to the hotel to recuperate from your flights and prepare for your upcoming adventure.

### **Oct 27–30 ~ Track Chimpanzees in Kibale National Park**

Drive from Entebbe to Ndali Lodge in the popular Kibale National Park. Kibale National Park is known for its variety and concentration of primates, such as vervets, l'Hoest's, red colobus, black-and-white colobus, chimpanzees, and olive baboons. You may also encounter forest elephants, which are smaller and hairier than the savannah elephants.



*Chimpanzee © Scott Davis*

Kibale National Park is home to roughly 1,500 chimpanzees, all separated into various troops and some lone individuals. Several of the troops are habituated to humans, so you'll be able to observe them throughout the day without them getting anxious or upset. We obtain special permits that allow you to spend full days with the chimpanzees. Plan to be up before dawn and hike into the forest, arriving at your focal chimp group just in time to see them wake up and rise from their sleeping nests. You'll spend the day watching them as they eat, groom, play, take care of their young, and go through their daily routine in their natural habitat. Your expert guide will describe behaviors and point out other species you will see along the way such as other primates, bush pigs, dukiers, many amphibian and reptile species, and over 375 bird species.

On the last morning, you will take a tour of the Bigodi Wetland Sanctuary to see other primate species and many bird species. The wetland boasts a rich habitat and great conservation success story. The area, once known for poaching, is now run and managed by the locals who directly benefit from the tourism. After touring Bigodi, you will follow your chimpanzee troop for the remainder of the day.

### **Oct 31 – Nov 1 ~ Queen Elizabeth National Park**

You will bid farewell to Kibale and the chimpanzees and drive to the northern sector of Queen Elizabeth National Park. Located within the famous Albertine Rift Valley, the park is home to over 95 mammal species and over 600 bird species due to the variety of habitats found here, including savannahs, wetlands, and rainforests. You'll take an afternoon game drive to explore the park and have time to relax by the Kazinga Channel.



*Tree Climbing Lions © Scott Davis*

Depart for an early morning game drive in search of elephants, hippos, buffaloes, and the famous tree climbing lions. Then, head to the mating ground of the Uganda kob, a species of antelope that appears on the Ugandan national flag. Game drives in the Ishasha sector may also bring you many more wildlife in their



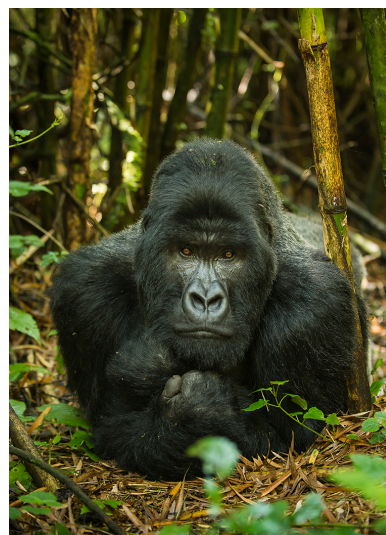
natural habitat. You will also spend half a day with lion researchers as they track lions – a special opportunity most tourists never experience!

### **Nov 2–5 ~ Track Gorillas in Bwindi Impenetrable Forest**

Take a scenic drive south to Bwindi Impenetrable Forest, home of the critically endangered mountain gorillas (*Gorilla beringei beringei*). This forest is part of a national park that lies on the edge of the Albertine Rift Valley, in southwestern Uganda, with a wide altitude range between 1,160m and 2,600m. The forest dates back to the ice ages and is one of Uganda's oldest and most ecologically diverse regions. It is home to almost 400 species of plants, 350 species of birds, including 23 Albertine Rift endemics, plus 120 mammal species including rodents and bats, as well as mountain gorillas, olive baboons, chimpanzees, elephants, and antelopes.

Your knowledgeable guide from the lodge will take you out to track mountain gorillas each day. After a briefing by your gorilla guide, who will tell you about your assigned gorilla family and appropriate safety precautions, you will make your way to the trailhead for the start of a thrilling adventure. Expect to hike long distances in steep and sometimes muddy conditions, taking anywhere from two to eight hours to find the gorillas, so be prepared for a long day of hiking.

Once you arrive at your family of gorillas, you have one hour with them as they go about their daily life. You will observe feeding, moving, playing, raising their young, and sometimes wrestling by the juveniles. Coming face to face with a giant mountain gorilla is a truly breath-taking wildlife experience!



Mountain Gorilla © Scott Davis

### **Nov 6 ~ Fly back to Entebbe**

Fly back to Entebbe on a private chartered plane. While in Entebbe, you will have a dayroom to refresh before catching your international flights home.

### **Nov 7 ~ Arrive home**

Arrive home today depending on your flight schedule.

## **COSTS (ALL COSTS ARE IN US DOLLARS)**

---

### **Cost**

Type	Cost Per Person
Trip Cost, double occupancy	\$12,500
Single Supplement	\$1,300

Costs are per person, double occupancy, not including airfare (except chartered flight from Bwindi to Entebbe), singles extra. See *Included* and *Not Included* sections for more details.

We reserve the right to charge for cost increases that occur between when we set tour prices and the date of travel, for example, changes due to the cost of lodging and transportation. If you are a single traveler and

you desire, we will find a roommate for you. If we cannot find you a roommate, we may charge you a single supplement fee. Single rooms are subject to availability.

### Payment Schedule

Payment	Due Date	Amount per Person
Deposit	Due now to reserve your space	\$500
Second	October 1, 2018	\$2,000
Final	April 1, 2019	Remaining Balance

Payments will be due based on the following schedule. All reservations require a deposit to confirm reservation of your space. For reservations made after a due date, all past payments will be due with registration. By sending your initial deposit, you agree to accept our payment schedule as a contract. If payments are still outstanding two weeks after the due date, your space may be forfeited.

### Cancellations

Until the Final Payment due date, deposits are refundable except for a cancellation fee of \$150 per person, which can be applied toward another tour if reserved within six months of the cancelled trip's departure date. Cancellations are non-transferrable. No refunds are given after the Final Payment due date.

### Included

- All leaders, transport, and park entry fees for all activities described in the detailed itinerary.
- Permits for two full days and one half-day tracking chimpanzees in Kibale National Park and three one-hour visits with gorillas in the Bwindi Impenetrable Forest.
- Chartered flight from Bwindi to Entebbe on November 6.
- Lodging for the nights of October 26 through November 5. A day-room is provided on November 6.
- Meals from dinner on October 26 through lunch on November 6.
- Bottled water while trekking and in game drive vehicles.
- Transfers on October 26 and November 6 between the airport and the hotel in Entebbe.
- English-speaking drivers, park rangers, and trackers.
- Short Term AMREF Flying Doctor medical emergency evacuation insurance. This does not include hospital or treatment costs. For more information, see [www.flydoc.org](http://www.flydoc.org).
- Trip Materials - information about flights, packing, entry and departure requirements, airport transfers, gratuities, etc.

### Not Included

- All airfare (except flight listed as included), airport and departure taxes, and excess baggage fees. Airfare is approximately \$1,000 from the USA to Entebbe, Uganda (estimated April 2018).
- We can arrange divergent airport transfers and extra hotel nights for an extra cost.
- Visa fees.
- Trip cancellation insurance. For more information see [www.cheesemans.com/travel-insurance](http://www.cheesemans.com/travel-insurance)
- Gratuities: tipping is, of course, discretionary, however we suggest budgeting about \$45 to \$50 per participant per day for October 27 to November 5 for our local guides, tracking assistants, and lodge staff (about \$450 to \$500 total *per participant*).
- Hiring of local porters (optional) to carry your gear during hikes to find chimpanzee and gorilla.
- Items of a personal nature such as laundry, telephone calls, medical costs or hospitalization, room service, alcoholic and other beverages, and items not on the regular menu, etc. If you have special dietary needs, please indicate them on your Reservation/Release Form.

## SIGN UP

---

Please contact us first to check availability, reserve your space, and obtain a Reservation/Release Form. To confirm your reservation, we require a deposit and signed form from each participant.

Cheesemans' Ecology Safaris  
Email: [info@cheesemans.com](mailto:info@cheesemans.com)  
Website: [www.cheesemans.com](http://www.cheesemans.com)  
Skype: cheesemansecologysafaris  
Phone: (800) 527-5330 or (408) 741-5330  
Fax: (408) 741-0358

## OTHER DETAILS

---

### Climate

Uganda generally stays the same temperature year-round. Daytime temperatures range from 65 to 85° F with nighttime temperatures in the mid-50s° F, but with climate change weather is more variable, so prepare for varying climate conditions. October and November are the transitional months between the rainy and dry seasons in Uganda, so expect some rain. The Bwindi Impenetrable Forest is rainy and fairly damp year-round.

### Fitness Level

Hiking in search of gorillas and chimpanzees will total two to six miles per day (over four to eight hours) in steep, uneven, and muddy terrain. You'll hike regardless of the weather conditions. You can hire a local porter to carry your gear during the hikes; this is highly recommended so that you can focus on photography and the rugged terrain. Please contact us if you have any health concerns that may make this trip challenging.

### Accommodations

You will be staying at high-end lodges and tents. All rooms have private baths. Laundry facilities and additional amenities are available at all lodges, though may cost extra. After a long day of hiking to find the apes, you will appreciate the niceties of a warm shower, sunset views at the bar, good food, and a comfortable bed.

### Flight

Airfare, except flight listed as included, is not included in trip costs. Detailed logistical information and the contact information for our recommended flight-ticketing agent are included in the Trip Materials we will send you. Please let us know if you are arriving earlier or staying later as we are happy to assist you with any extra overnights that you might want to arrange.

Flights you (or a travel agent) book: Plan to arrive in Entebbe, Uganda (EBB) anytime on October 26. Plan to depart Entebbe in the evening on November 6.

Flights we book for you: One-way flight from Bwindi to Entebbe on November 6. The cost of this booking is included in the tour cost.

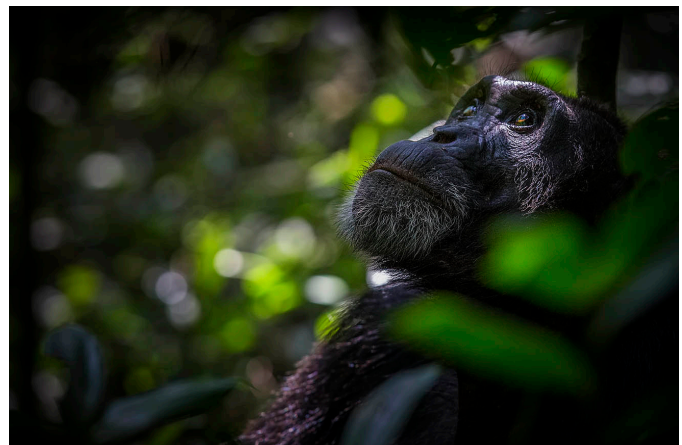
## Conditions

- **Non-smoking policy:** We have a strict non-smoking policy. Smoking is not permitted at any time or any place during our tours.
- **Maximum time in nature:** We try to spend as much time in nature as possible, sometimes resulting in long days, but giving you a more in-depth experience.
- **Itinerary route:** The itinerary route, stops and plans are subject to change by unforeseen circumstances beyond our control, such as weather or road conditions.
- **Additional forms:** For some of our tours, you may be asked to fill out additional forms (e.g., medical questionnaire).
- **Medical conditions and travel risks:** Travel to remote places is exciting, but it is important to understand and accept the risks, both medical and logistical. Minor medical problems can usually be treated, but because you are often far from medical facilities, there can be no expectation for immediate medical treatment or evacuation, even in cases of trauma. Anyone with health problems needing close medical supervision should not consider going on this tour. Bring enough medication for the duration of the trip for any chronic medical needs since pharmacies are usually not available. When you send your deposit and signed Reservation/Release Form, you certify to us that you do not knowingly have any physical or other conditions that would create a risk for yourself or for other trip participants.
- **Use of drones/UAVs on tours:** Unmanned Aerial Vehicles (UAVs), AKA drones, are not suitable for use on most Cheesemans' Ecology expeditions due to logistical constraints and in many cases, local and national laws or regulations. In some cases, such as on our polar voyages, we operate under environmental regulations that ban the use of recreational drones. Do not bring a drone on safari without contacting us first.

## Conservation

Cheesemans' Ecology Safaris is passionate about conserving the precious regions that we travel to and supports many conservation efforts. By visiting these areas, we contribute to sustainable conservation of these valuable wildlife habitats. We urge you to support conservation organizations that protect and restore natural habitats and write letters to tourism and government agencies to promote work in preserving wildlife.

We aim to make all our trips carbon neutral by splitting the cost of carbon offsetting with our participants. For your convenience, the optional donation amount for your half of the carbon offset will be indicated on your invoice. We source high quality offsets through CarbonTree Conservation Fund, a non-profit we helped found, supporting pioneering forest conservation in the Valdivian Coastal Reserve, a Nature Conservancy project ([http://bit.ly/valdivia\\_tnc](http://bit.ly/valdivia_tnc)).



Chimpanzee ©Scott Davis

## FAQS

---

### **Why is this a photography tour?**

Scott knows Uganda well and is eager to show you photographic techniques for optimal photography with primates. Our days are planned to spend as much time as possible observing and photographing wildlife behavior. Although this trip emphasizes photography, any skill level is welcomed and encouraged. You can forego photography altogether to watch animal behaviors for long periods of time if you choose. Our small group size gives us the flexibility to stay at a perfect photographic moment to capture world-class images. Scott will offer instruction on wildlife photography throughout the trip, as well as offer one-on-one critique time in the evenings.

### **What are the primate encounter rules?**

- Your guides will review these rules before you visit the chimpanzees and gorillas.
- Do not approach closer than the minimum distance of 7m (21ft) from the primates. This is to control disease transmission and to not aggravate the animals.
- Total silence, no smoking, no eating or drinking, and no pointing or staring directly at the primates.
- No flash photography.
- Follow the guide's directions and actions at all times.
- Move slowly and be calm at all times.
- If you are feeling ill or know that you have a contagious disease, do not attempt to track the primates. Chimps and gorillas are very susceptible to human diseases. You will not be allowed a refund of your permit if you cannot go trekking. Please respect this rule and put the primates' health first.