



CHEESEMANS' ECOLOGY SAFARIS

555 North Santa Cruz Avenue
Los Gatos, CA 95030-4336 USA
(800) 527-5330 (408) 741-5330
info@cheesemans.com
cheesemans.com

Southern Africa: Namibia, South Africa, and Zambia *Desert Dunes and Wildlife* July 23 to August 8, 2020



Lion © Scott Davis

SAFARI OVERVIEW

Travel to Namibia, South Africa, and Zambia to capture remarkable moments on your camera with professional photographer Scott Davis. You'll visit some of the best sites to photograph southern Africa's quintessential wildlife and its iconic landscapes. You'll visit South Luangwa National Park in Zambia and Sabi Sand Private Game Reserve (part of the Greater Kruger National Park system) in South Africa, regions with incredibly accessible biodiversity including Africa's Big Five (lions, elephants, rhinos, leopards, and buffalo) and many beautiful birds. Discover the picturesque red sand dunes and salt pans of Sossusvlei in the Namib Desert of Namibia. Encounter nocturnal wildlife and do some star-gazing during evening game drives. This safari will provide you with opportunities to capture quality images of unique African wildlife and beautiful landscapes.

HIGHLIGHTS

- Learn wildlife, landscape, and nighttime photography techniques from naturalist and professional photographer Scott Davis.
- Study and photograph wildlife behaviors from safari vehicles and special observation blinds at South Luangwa National Park, known for large congregations of game animals like elephants, giraffes, and zebras.
- Explore Namibia's famous red sand dune and salt pan landscapes. Hike to the top of Dune 45!
- See great predators such as lions, cheetahs, leopards, African painted dogs, jackals, and hyenas.

LEADER: Scott Davis assisted by local resident guides.

DAYS: 17 including estimated travel time.

GROUP SIZE: 11.

COST: \$16,750 per person, double occupancy, not including airfare (except the seven internal flights listed as included), singles extra. See the *Costs* section on page 5.

ACCOMMODATIONS: From modern to luxurious. For stays of more than one night, stay at very high-end camps and lodges where stunning views, modern amenities, excellent food, and extreme comfort are all prioritized.

CONDITIONS: This is a **non-smoking tour** for people who are very interested in spending the maximum time in nature. See the *Conditions* section on page 7.

Date	Description	Accommodation	Meals
Jul 23	Travel to Johannesburg, South Africa.		
Jul 24	Arrive in Johannesburg, South Africa.	City Lodge Hotel, Johannesburg	—
Jul 25–28	Fly to Mfuwe, Zambia and transfer to Kaingo Camp for three full days of game-viewing in South Luangwa National Park.	Kaingo Camp, South Luangwa National Park	B, L, D
Jul 29	In the morning, wildlife watch near camp and then fly to Windhoek, Namibia.	Olive Grove Guesthouse, Windhoek	B, L, D
Jul 30–Aug 1	Fly to Sossusvlei, Namibia. Spend two-and-a-half days taking guided walks and driving through enchanting desert scenery.	Sossus Dune Lodge, Sossusvlei	B, L, D
Aug 2	Take a scenic flight to Windhoek and then fly to Johannesburg.	City Lodge Hotel, Johannesburg	B, L, D
Aug 3–6	Fly to Sabi Sand where you will enjoy early morning and evening game drives and midday safari walks.	Ulusaba Rock Lodge, Sabi Sand Private Game Reserve	B, L, D
Aug 7	Fly to Johannesburg for connecting flights homeward.		B
Aug 8	Arrive home.		

LEADER



Scott Davis

Scott is a professional photographer specializing in wildlife, nature, and travel. Originally trained as a wildlife and marine biologist, his research and photo assignments took him to the far corners of the globe. National Geographic, BBC, Animal Planet, and other renowned magazines have used his photography. His patience for teaching and love of capturing the essence of his subjects make him one of our most popular tour leaders.

DETAILED ITINERARY

Jul 23 ~ Travel to Johannesburg, South Africa

Depart from home and travel to Johannesburg, South Africa.

Jul 24 ~ Arrive in Johannesburg

Arrive in Johannesburg where you will be greeted at the airport and transferred to your hotel.

Jul 25–28 ~ Visit South Luangwa National Park

Fly to Mfuwe, Zambia and then drive to Kaingo Camp at South Luangwa National Park. You'll have game-viewing opportunities on foot, by private vehicles during daytime and nighttime, and from observation blinds. The camp's network of photography blinds is perfectly situated for wildlife observation and photography. They include a hippo hide and an elephant hide that offer great views of the wildlife within this pristine environment.



Hippo © Scott Davis

South Luangwa is touted by many travel experts (e.g. Lonely Planet, Fodor's, TripAdvisor) as being one of the greatest wildlife sanctuaries in Africa. The Luangwa River is the most intact major river system in Africa and supports life within the park's 9,050km². More than 60 mammal species and 400 bird species reside along the river. You'll encounter local and incredibly varied fauna, including lions, leopards, zebras, giraffes, wild dogs, and many charismatic birds like the carmine bee-eaters.

During night drives in the Luangwa, you'll have opportunities to see leopards and many other nocturnal animals. You may encounter African civets, common (or small-spotted) genet, spotted hyenas, nightjars, honey badgers (ratels), and lions. On most nights you may hear hyenas and their plaintive, eerie cry –very characteristic of the African bush.

Jul 29 ~ Wildlife watching near camp

This morning enjoy wildlife action near camp. After breakfast you'll fly from Mfuwe to Windhoek, Namibia where you can explore Namibia's capital city or relax at the lodge.



Salt Pans © Scott Davis

Jul 30–Aug 1 ~ Explore the Sossusvlei salt pans of Namib-Naukluft National Park

Fly mid-morning from Windhoek to an airstrip near Sossus Dune Camp to begin exploring the Namib Desert. Enjoy daytime nature drives through the famed Sossusvlei region of the desert, known for its red sand dunes and salt pans. You'll visit iconic landmarks of this region including taking a guided walk in the Sesriem Canyon, photographing and hiking up Dune 45, and exploring the Petrified Dunes where sand has turned to stone. The landscapes here vary, including canyons with narrowly carved corridors, salt pans with old acacia trees, and vast

seas of red sand dunes, making this region a natural marvel with excellent photography opportunities at every turn!

Aug 2 ~ Overnight in Johannesburg

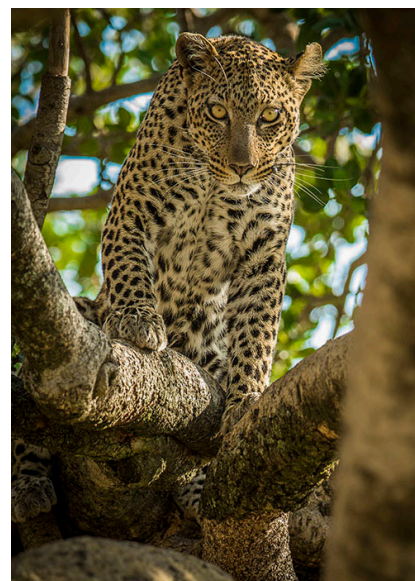
After breakfast, enjoy your last day in Namibia with a scenic flight to Windhoek, and then fly to Johannesburg.

Aug 3–6 ~ Sabi Sand Private Game Reserve

In the morning, you'll fly to Sabi Sand Private Game Reserve, part of the Greater Kruger National Park. Sabi Sand was once agricultural land where farmers bored holes into the ground for water wells. Those water wells now serve as watering holes, bringing the resident wildlife together to congregate en-mass and providing you with an excellent place to watch for predators hunting their thirsty prey.

Sabi Sand is well-known for its leopards – these particular animals are accustomed to the vehicles and so many of their behaviors, including hunting, are more easily observable here than in other regions. You may also photograph cheetah, Burchell's zebra, giraffe, common wart-hog, and honey badger. You will also have the opportunity to see birds such as the ostrich.

Take early morning game drives to see zebras grazing in the open plains, elephant herds gathering near the water, giraffes pacing across the landscape, and lions resting in the shade. You'll also have opportunities to get up close and personal with the animals during walking safaris guided by armed rangers and experienced trackers. In the evening, after dinner at the lodge or in the bush, join game drives in search of the elusive nocturnal wildlife and enjoy the magnificent stargazing that these remote skies offer.



Leopard © Scott Davis

Aug 7 ~ Fly back to Johannesburg

Fly back to Johannesburg in the morning and continue on your international flights homeward.

Aug 8 ~ Arrive home

Arrive home depending on your flight schedule.

COSTS (ALL COSTS ARE IN US DOLLARS)

Cost

Type	Cost per Person
Trip Cost, double occupancy	\$16,750
Single Supplement	Contact us

Costs are per person, double occupancy, not including airfare (except seven internal flights listed as included), singles extra. See *Included* and *Not Included* sections for more details.

Payment Schedule

Payment	Due Date	Amount per Person
Deposit	Due now to reserve your space	\$500
Second	April 15, 2019	\$4,000
Final	February 15, 2020	Remaining Balance

Payments will be due based on the schedule above. All reservations require a deposit to confirm reservation of your space. For reservations made after a due date, all past payments will be due with registration. By sending your initial deposit, you agree to accept our payment schedule and cancellation policy as a contract. If payments are still outstanding two weeks after the due date, your space may be forfeited.

Cancellations

Until the Final Payment due date, deposits are refundable except for a cancellation fee of \$150 per person, which can be applied toward another tour if reserved within six months of the cancelled trip's departure date. Cancellations are non-transferrable. No refunds are given after the Final Payment due date.

Included

- All leaders, transport, park entry fees, and permits for all activities unless described as optional.
- Seven internal flights between July 25 and August 7.
- Accommodations (double occupancy) for the nights of July 24 through August 6.
- Meals from breakfast on July 25 through breakfast on August 7.
- All airport transfers.
- Trip Materials – information about flights, packing, entry and departure requirements, airport transfers, gratuities, etc.

Not Included

- All airfare (except flights listed as included), airport and departure taxes, and excess baggage fees.
- Passport and visa fees.
- We can arrange divergent airport transfers and extra hotel nights for an extra cost.
- Gratuities – tipping is, of course, discretionary, however we suggest budgeting about \$22 to \$25 per participant per day for July 25 to August 5 with our local guides (about \$264 to \$300 total *per participant*).
- Emergency medical and evacuation insurance, but it is required for you to purchase. For more information see www.cheesemans.com/travel-insurance
- Trip cancellation insurance. For more information see www.cheesemans.com/travel-insurance

- Items of a personal nature such as laundry, telephone calls, medical costs or hospitalization, room service, alcoholic and other beverages, items not on the regular menu, etc. If you have special dietary needs, please indicate them on your Reservation/Release Form.

SIGN UP

Please contact us first to check availability, reserve your space, and obtain a Reservation/Release Form. To confirm your reservation, we require a deposit and signed form from each participant.

Cheesemans' Ecology Safaris

Email: info@cheesemans.com

Website: www.cheesemans.com

WhatsApp: (408) 741-5330 | Skype: cheesemansecologysafaris

Phone: (800) 527-5330 or (408) 741-5330

Fax: (408) 741-0358

OTHER DETAILS

Climate

Daily temperatures in July and August vary from below freezing (32°F, 0°C) up to about 85°F (29°C) during the day with the possibility of some rain. In the last five years, the dynamics of climate change have impacted the area with an increase in temperatures, so dress in layers.

Fitness Level

Minimal fitness level is required. Our game drives require good energy levels, as some days are long. Most travel is in open-air safari vehicles on sometimes dusty and bumpy roads. You will have opportunities for short, relaxed hikes, usually less than one mile over varied terrain (sand dunes, flat areas, hilly and grassy areas, or rocky slopes) and, at times, uphill for about 20–30min. Please contact us if you have any health concerns that may make this trip challenging.

Accommodations

The lodging ranges from modern to luxurious. For stays of more than one night, we stay at very high-end camps and lodges where stunning views, modern amenities, excellent food, and extreme comfort are all prioritized. The lodges have restaurants, internet access, and laundry service. The rooms have en-suite bathrooms, private outdoor seating, as well as outdoor showers/baths – after a long day in the bush, you may appreciate a warm bubble bath with a sunset view.

Flights

Unless listed as included, airfare is not included in trip costs. Detailed logistical information and the contact information for our recommended flight-ticketing agent are included in the Trip Materials we will send you. Please let us know if you are arriving earlier or staying later as we are happy to assist you with any extra overnights that you might want to arrange.

Flights you (or a travel agent) book: Arrive in Johannesburg, South Africa (JNB) by July 24. Depart from Johannesburg airport (JNB) late in the afternoon on August 7.

Flights we book for you: The seven internal flights between Namibia, South Africa, and Zambia during your safari from July 25 to August 7. The cost of these bookings is included in the tour cost.

Conditions

- **Non-smoking policy:** We have a strict non-smoking policy. Smoking is not permitted at any time or any place during our tours.
- **Maximum time in nature:** We try to spend as much time in nature as possible, sometimes resulting in long days, but giving you a more in-depth experience.
- **Itinerary route:** The itinerary route, stops, and plans are subject to change by unforeseen circumstances beyond our control, such as weather or road conditions.
- **Additional forms:** For some of our tours, you may be asked to fill out additional forms (e.g., medical questionnaire).
- **Medical conditions and travel risks:** Travel to remote places is exciting, but it is important to understand and accept the risks, both medical and logistical. Minor medical problems can usually be treated, but because you are often far from medical facilities, there can be no expectation for immediate medical treatment or evacuation, even in cases of trauma. Anyone with health problems needing close medical supervision should not consider going on this tour. Bring enough medication for the duration of the trip for any chronic medical needs since pharmacies are usually not available. When you send your deposit and signed Reservation/Release Form, you certify to us that you do not knowingly have any physical or other conditions that would create a risk for yourself or for other trip participants.
- **Use of drones/UAVs on tours:** Unmanned Aerial Vehicles (UAVs), AKA drones, are not suitable for use on most Cheesemans' Ecology expeditions due to logistical constraints and in many cases, local and national laws or regulations. In some cases, such as on our polar voyages, we operate under environmental regulations that ban the use of recreational drones. Do not bring a drone on safari without contacting us first.

Conservation

Cheesemans' Ecology Safaris is passionate about conserving the precious regions that we travel to and supports many conservation efforts. By visiting these areas, we contribute to sustainable conservation of these valuable wildlife habitats. We urge you to support conservation organizations that protect and restore natural habitats and write letters to tourism and government agencies to promote work in preserving wildlife.

We aim to make all our trips carbon neutral by splitting the cost of carbon offsetting with our participants. For your convenience, the optional donation amount for your half of the carbon offset will be indicated on your invoice. We source high quality offsets through CarbonTree Conservation Fund, a non-profit we helped found, supporting pioneering forest conservation in the Valdivian Coastal Reserve, a Nature Conservancy project (http://bit.ly/valdivia_tnc).